

THE EVOLVING LIBRARY
NEW USES FOR OLD SPACES



TROY AINSWORTH

Principal
FFA Architecture and Interiors, Inc.



BRENDA KATZ

Senior Associate
FFA Architecture and Interiors, Inc.



AMELIA SHELLEY

Executive Director
Fort Vancouver Regional Libraries



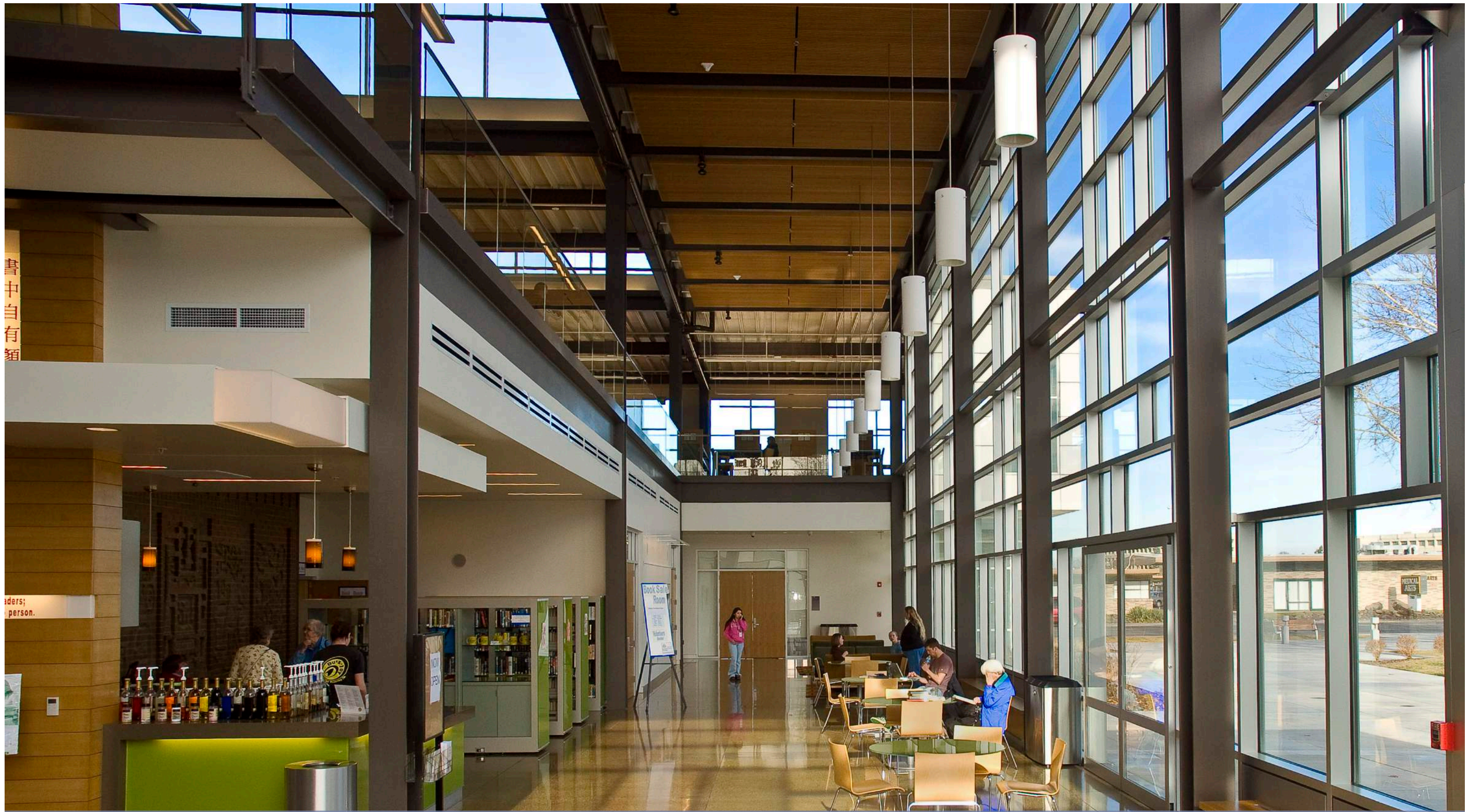
ISAAC GILMAN

Dean of University Libraries
Pacific University

CURRENT **LIBRARY TRENDS** AND **SPACE NEEDS**
WHY RENOVATE?



LIBRARY AS COMMUNITY SPACE
"THIRD PLACE"



RETAIL & HOSPITALITY MODEL



FLEXIBLE AND ADAPTABLE



ACCESS TO TECHNOLOGY



EVOLVING POINTS OF SERVICE



ACTIVE LEARNING AND CREATION SPACES



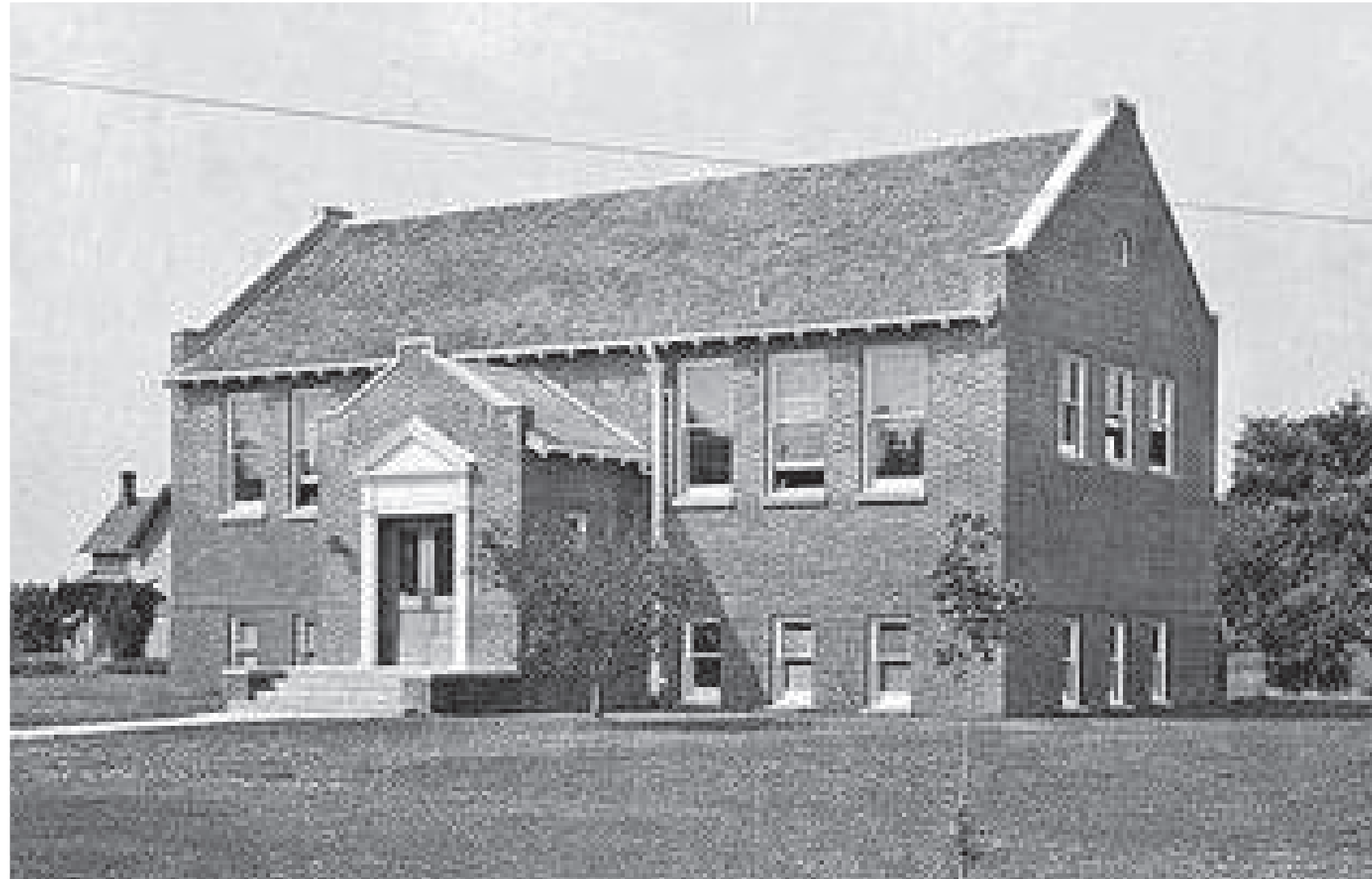
Library!

INCLUSION, WELLNESS AND SUSTAINABILITY



PARTNERSHIPS

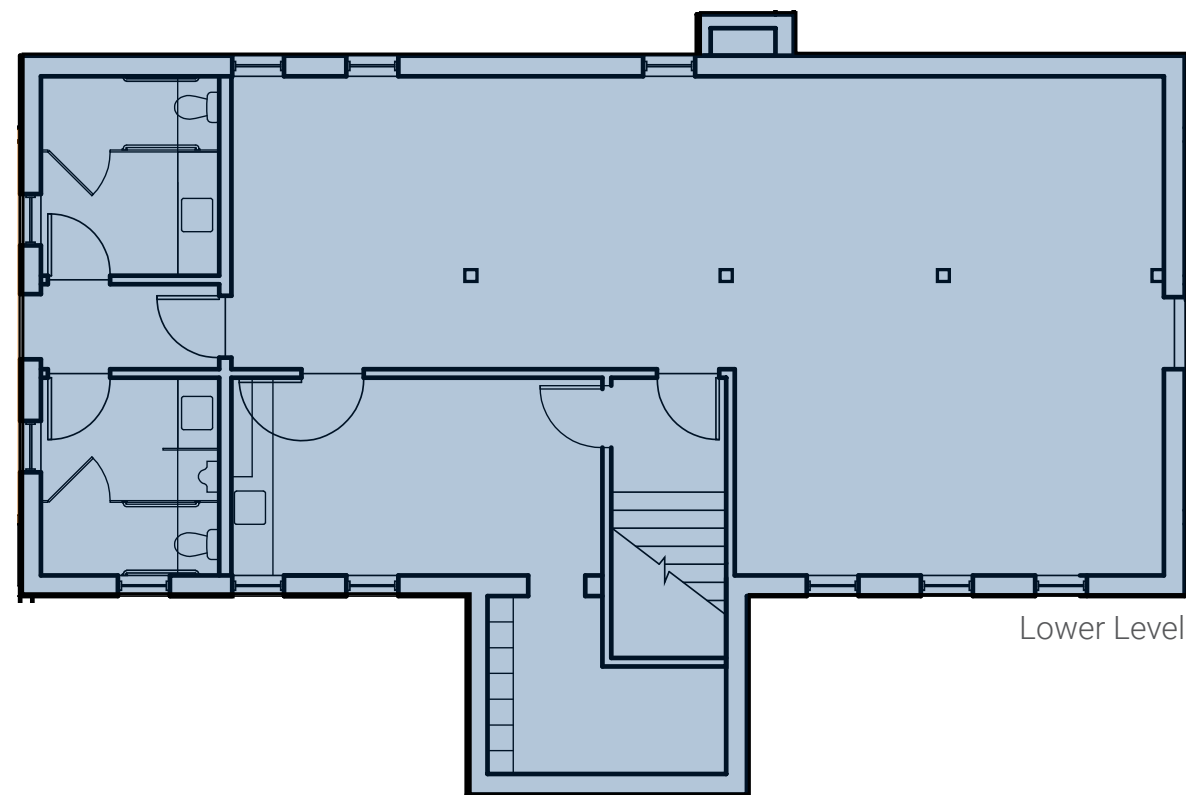
CASE STUDY I
FVRL GOLDENDALE COMMUNITY LIBRARY



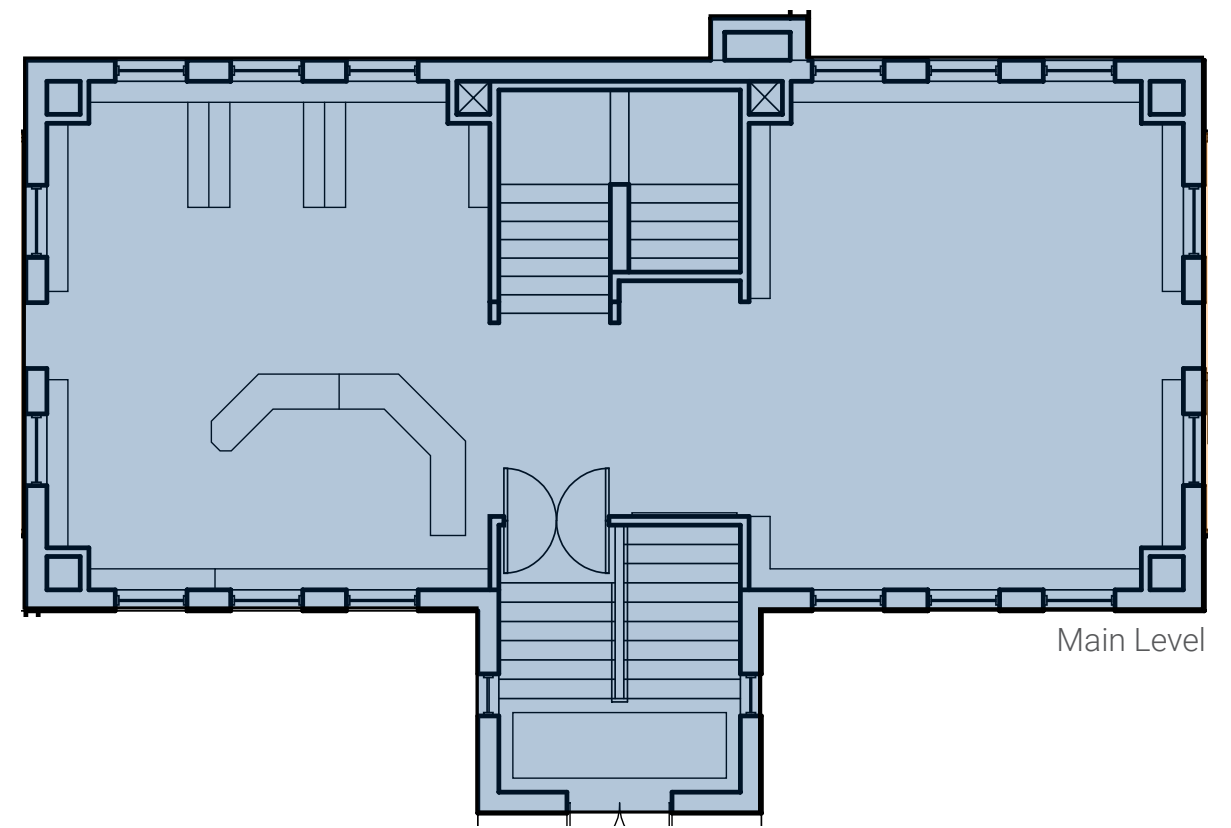
1914 CARNEGIE LIBRARY



1985 RENOVATION AND EXPANSION



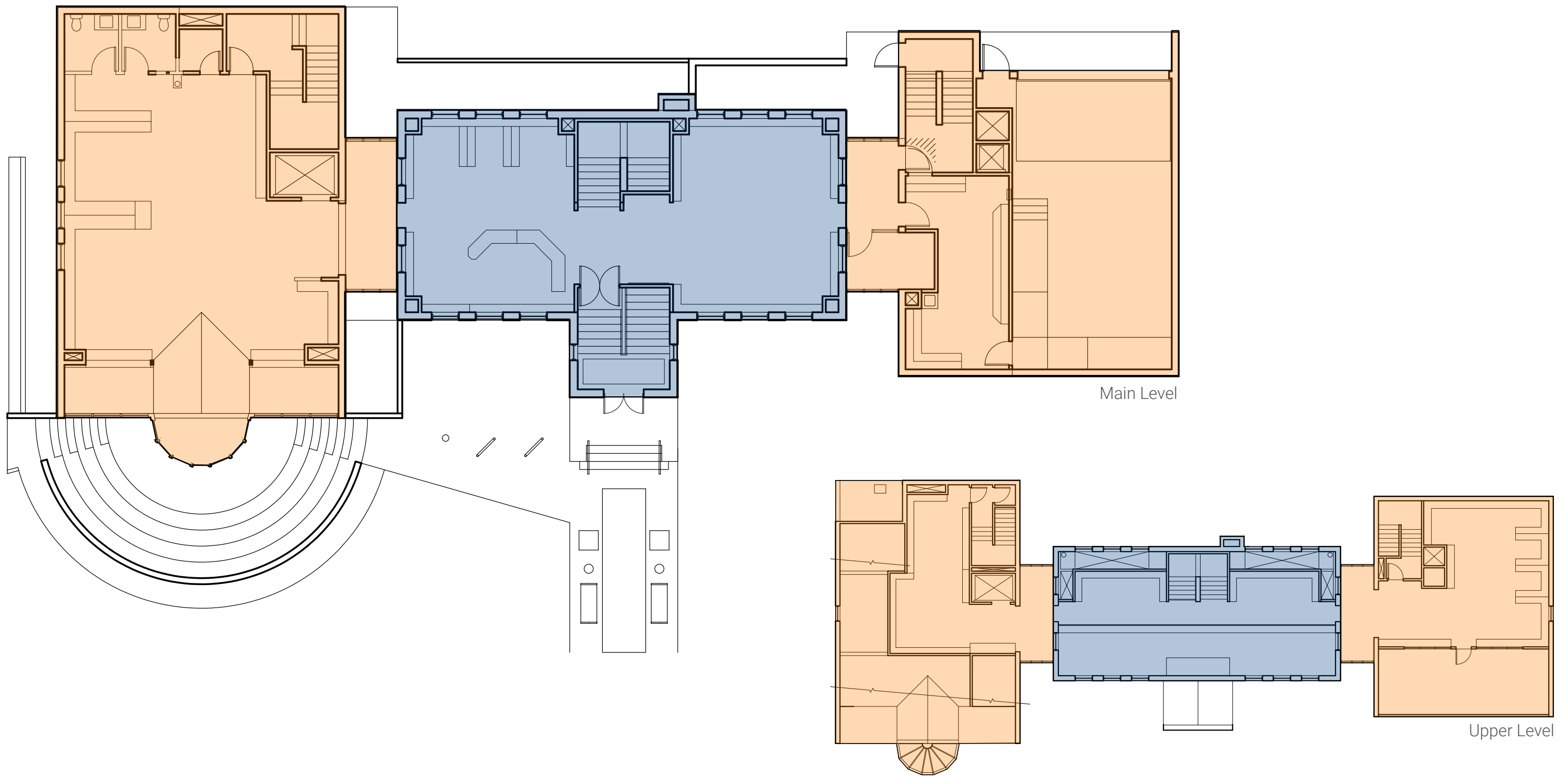
Lower Level



Main Level

GOLDENDALE LIBRARY

ORIGINAL FLOOR PLAN



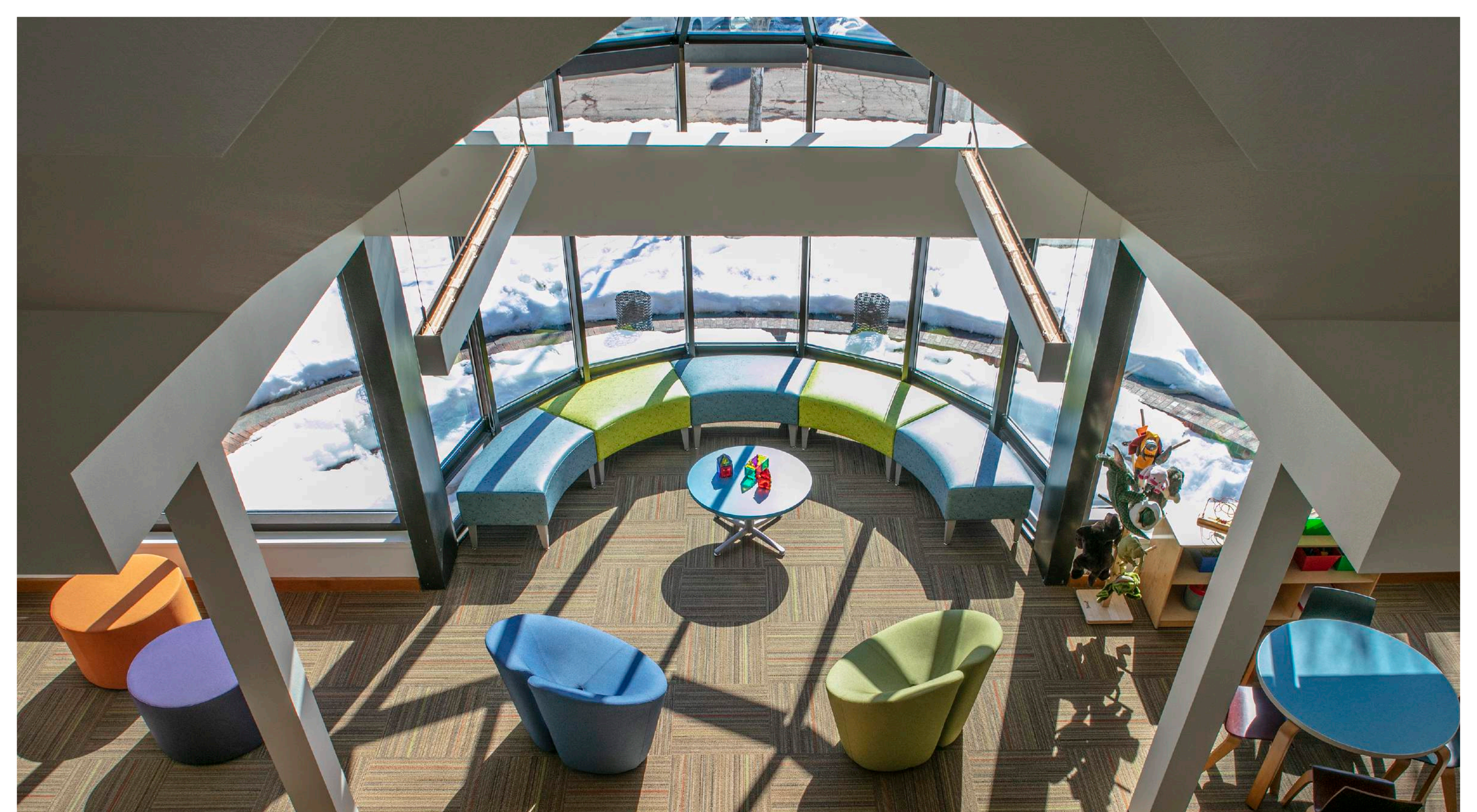
GOLDENDALE LIBRARY EXPANSION FLOOR PLAN



2018 RENOVATION
AFTER



2018 INTERIOR RENOVATION
BEFORE



GENERAL BUILDING FEATURES
AFTER



PUBLIC SPACES
BEFORE



PUBLIC SPACES - COMFORTABLE SEATING & READING AREAS
AFTER



PUBLIC SPACES - CHILDREN'S AREA
BEFORE



**PUBLIC SPACES - OPEN, LIGHT-FILLED CHILDREN'S AREA
AFTER**



PUBLIC SPACES - SPACES FOR TEENS
BEFORE



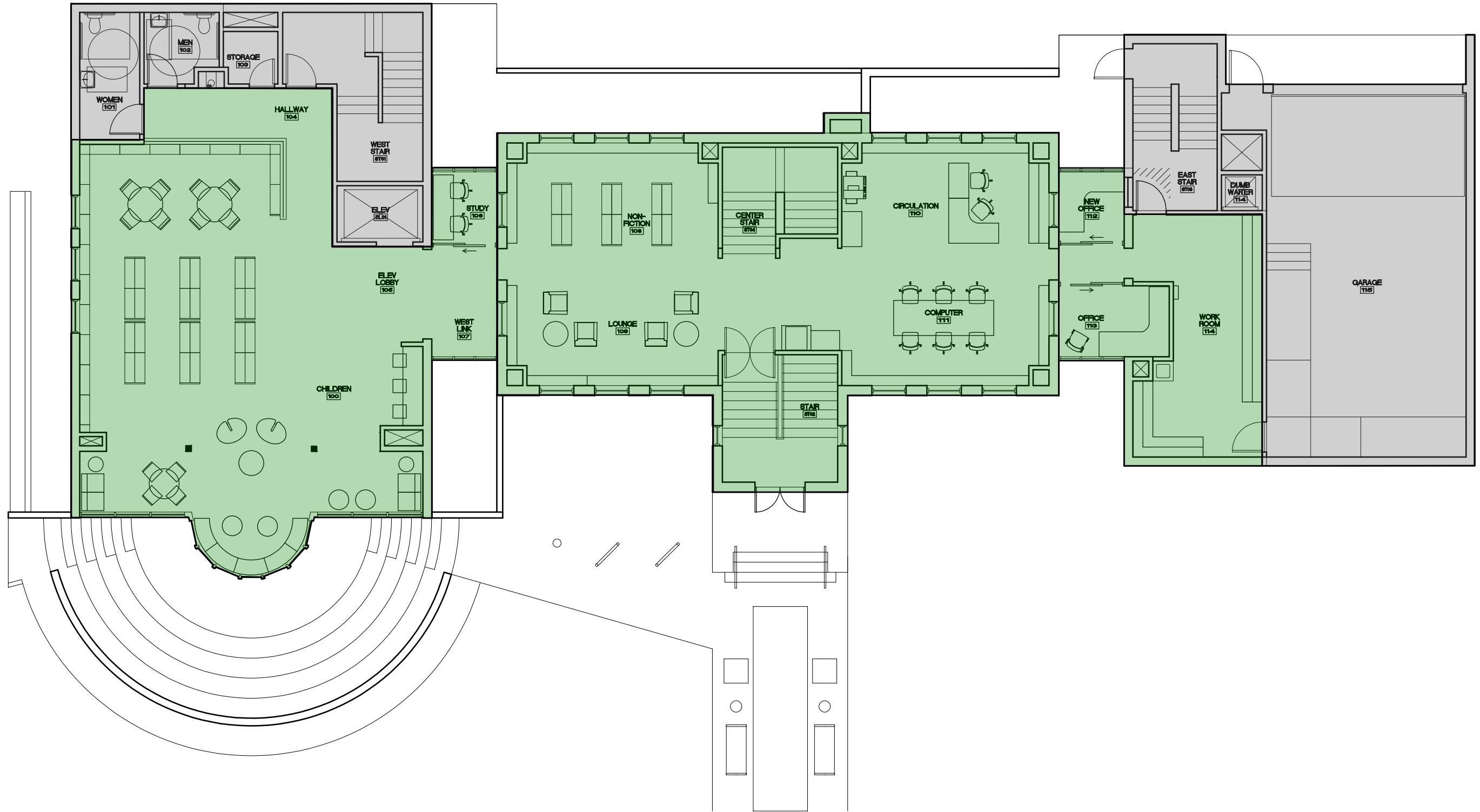
PUBLIC SPACES - SPACES FOR TEENS
AFTER



PUBLIC SPACES - INVITING QUIET SPACES FOR ADULTS
BEFORE & AFTER



PUBLIC SPACES - NEW STUDY AREAS
BEFORE & AFTER



FLEX SPACES

FURNITURE AND EFFICIENT LAYOUT



STAFF SUPPORT/SERVICE SPACES
BEFORE

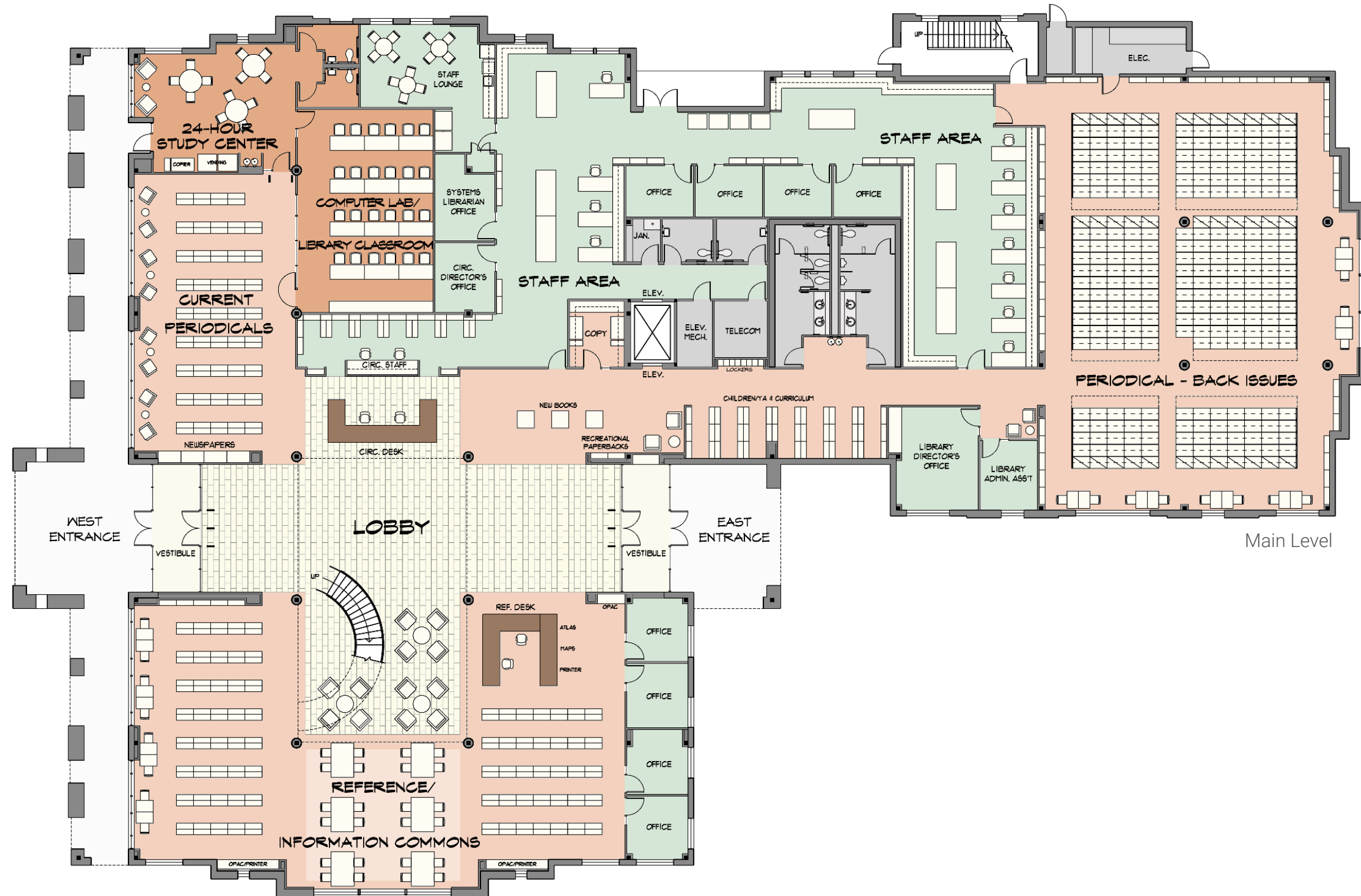


**STAFF SUPPORT/SERVICE SPACES
AFTER**

CASE STUDY II
TIM & CATHY TRAN LIBRARY FACILITY UPGRADES STUDY
PACIFIC UNIVERSITY

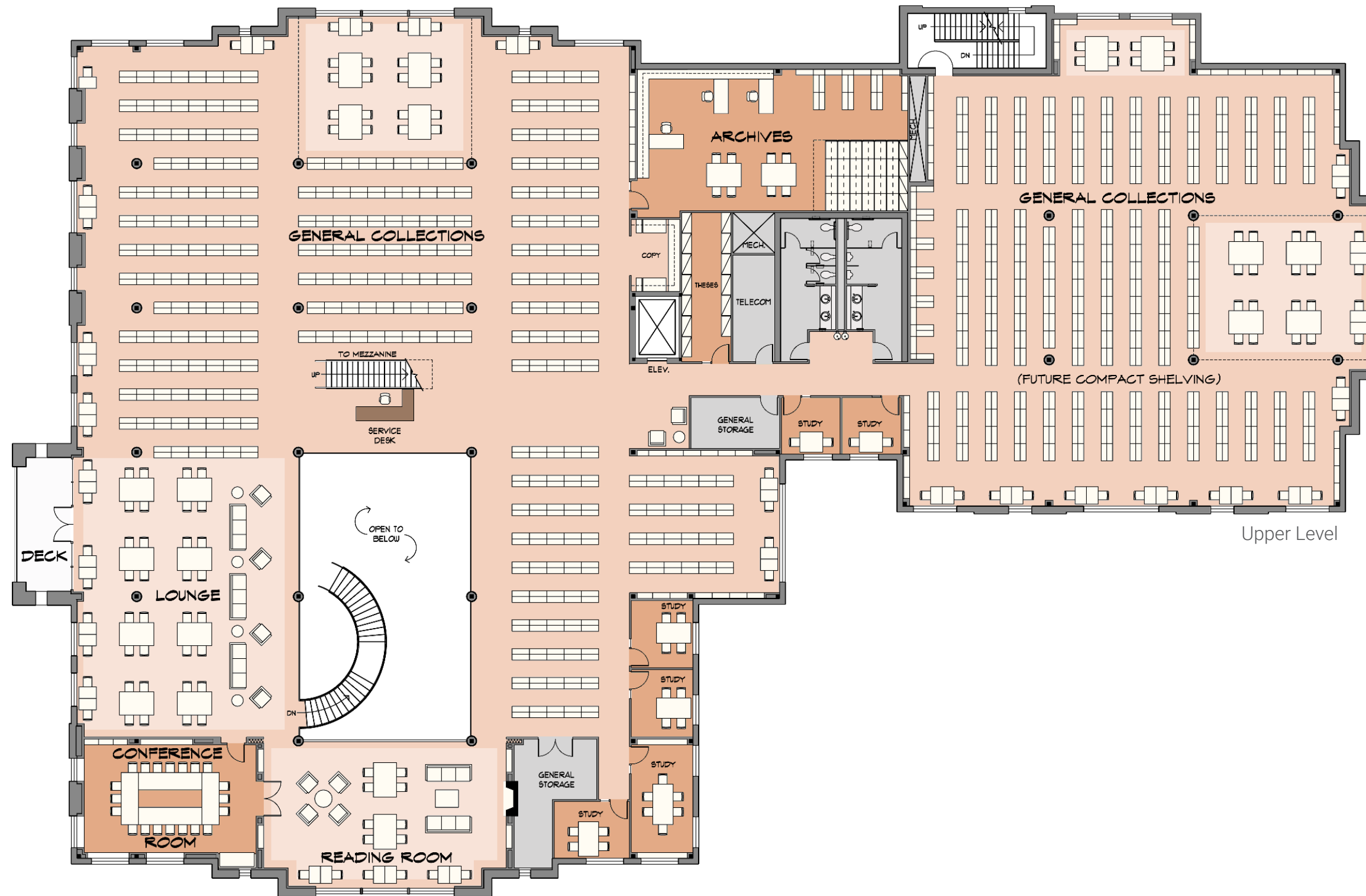


PACIFIC UNIVERSITY LIBRARY
ORIGINALLY DESIGNED BY FFA IN 2003

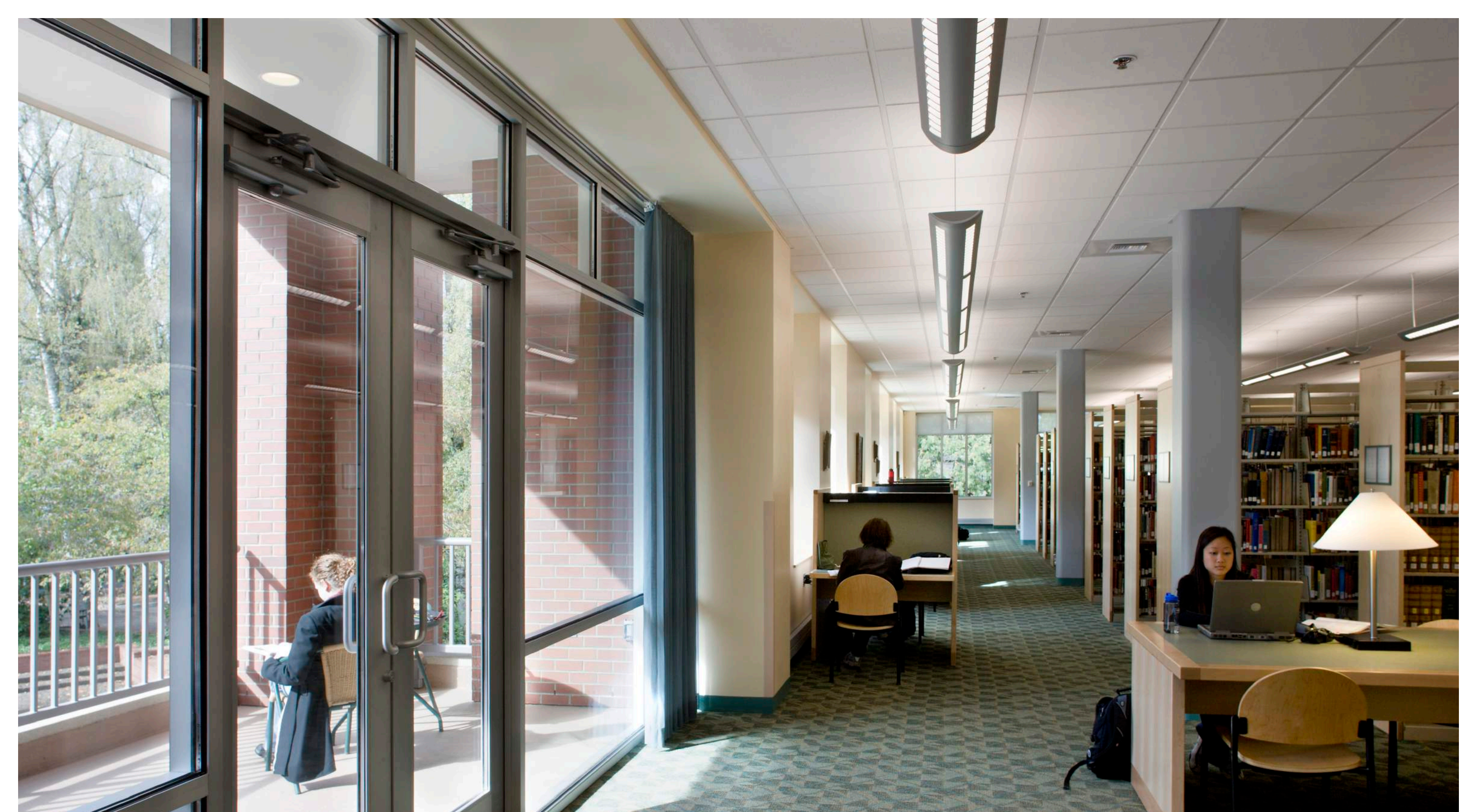


Main Level

ASPIRATIONS DESIGNED FOR ADAPTABILITY



ASPIRATIONS
 DESIGNED FOR ADAPTABILITY



ASPIRATIONS
DESIGNED FOR ADAPTABILITY



2005

2019

PHYSICAL AND ELECTRONIC COLLECTIONS	PHYSICAL AND ELECTRONIC COLLECTIONS
INFORMATION LITERACY INSTRUCTION	INFORMATION LITERACY INSTRUCTION
RESEARCH CONSULTATIONS	RESEARCH CONSULTATIONS
RESOURCE SHARING/ILL	RESOURCE SHARING/ILL
ARCHIVES/SPECIAL COLLECTIONS	ARCHIVES/SPECIAL COLLECTIONS
COMPUTERS FOR RESEARCH/COURSEWORK	COMPUTERS FOR RESEARCH/COURSEWORK
STAFFED REFERENCE DESK	NO STAFFED REFERENCE DESK
6 GROUP STUDY ROOMS	15 GROUP STUDY ROOMS
1,776 sf 24-HOUR STUDY SPACE	2,961 sf 24-HOUR STUDY SPACE
	UNIVERSITY PRESS
	ART AND EXHIBIT GALLERY
	ACADEMIC TECHNOLOGY CENTER
	PEER TUTORING
	INTERDISCIPLINARY MAKER SPACE
3,280 sf CIRCULATING BOOK STACKS	6,116 sf CIRCULATING BOOK STACKS

TIM & CATHY TRAN LIBRARY

65%

Students who report print books are important for their academic success

12.5%

Students who think the library should invest more in print books

12.5%

Faculty who think the library should invest more in print books

	FG Main	HC Main
Number of items	138,326	8,612
FY 2013-2014 Loans	10,574	1,980
FY 2014-2015 Loans	9,255	1,355
FY 2015-2016 Loans	8,279	1,223
FY 2016-2017 Loans	5,938	826
Number of items loaned 0 times since SILS go-live	115,560 (84%)	5,735 (67%)
Number of items loaned 1 time since SILS go-live	15,260 (11%)	1,410 (16%)
% of collection loaned 0-1 times in prior 4 years	95%	83%

Data: 2016-2017 Student & Faculty Survey

**PRINT BOOKS
IN THEORY AND PRACTICE**

56,515*

*Books in the circulating collection that had not circulated once in 20 years

THE MORE SHOCKING NUMBER (OR NOT?)

**Total ILL Borrowing Requests
(Returnables)**

**Consortia (Summit)
Borrowing Requests**

FY 2014-2015

3,460

--

FY 2015-2016

2,629

2,252

FY 2016-2017

2,121

1,939

FY 2017-2018

2,155

1,834

MAYBE THEY'RE GETTING BOOKS ELSEWHERE?

NOPE...

MISSION(S) ACCOMPLISHED

- Completed overdue assessment and de-accessioning project
- Assessed the collection based on use (objective and relevance to academic programs (subjective))
- “Re-homed” some materials (e.g. curriculum collection)
- Donated other materials (Better World Books)
- Reorganized the remaining materials (e.g. historical collection)

THE RESULTS

- Collection is more current (especially in areas where this is important, like health-care)
- Collection is more physically attractive/accessible (encouraging browsing/serendipitous use)
- **Space was created for more high-impact use...**

WHAT HAVE WE DONE?

41%

Students who mentioned lack of study rooms in 2012-2013 library survey

88%

Students who reported group study space was important to their academic success in 2016-2017 survey

41%

Increase in use of Media Commons space, following 2016 renovation

“Academic library partnerships with other campus units, such as the writing center [...], yield positive benefits for students (e.g., higher grades, academic confidence, retention)”

ACRL, Academic Library Impact on Student Learning and Success: Findings from Assessment in Action Team Projects (April 2017)

“Many libraries are making room for active learning classrooms, media production studios, makerspaces, and other areas conducive to collaborative and hands-on work. These changes reflect a deeper pedagogical shift in higher education to foster learning experiences that lead to the development of real-world skills and concrete applications for students.”

2017 Horizon Report: Library Edition. New Media Consortium

MOVING TOWARD HIGH-IMPACT SPACE USE

Mission Fulfillment:

To advance critical inquiry, **collaborative learning**, and **knowledge creation** through **dynamic** services, **spaces**, and collections.

In Practical Terms:

- Nearly tripling number of available study/collaboration rooms
- Creating space for peer tutoring (in addition to adding staff support)
- Creating more comfortable study space for non-residential students
- Creating a new teaching space for work with archives/museum collections
- Providing space for creative work across multiple disciplines
- Through partnership with campus innovation center, providing support for faculty engagement with makerspace technologies

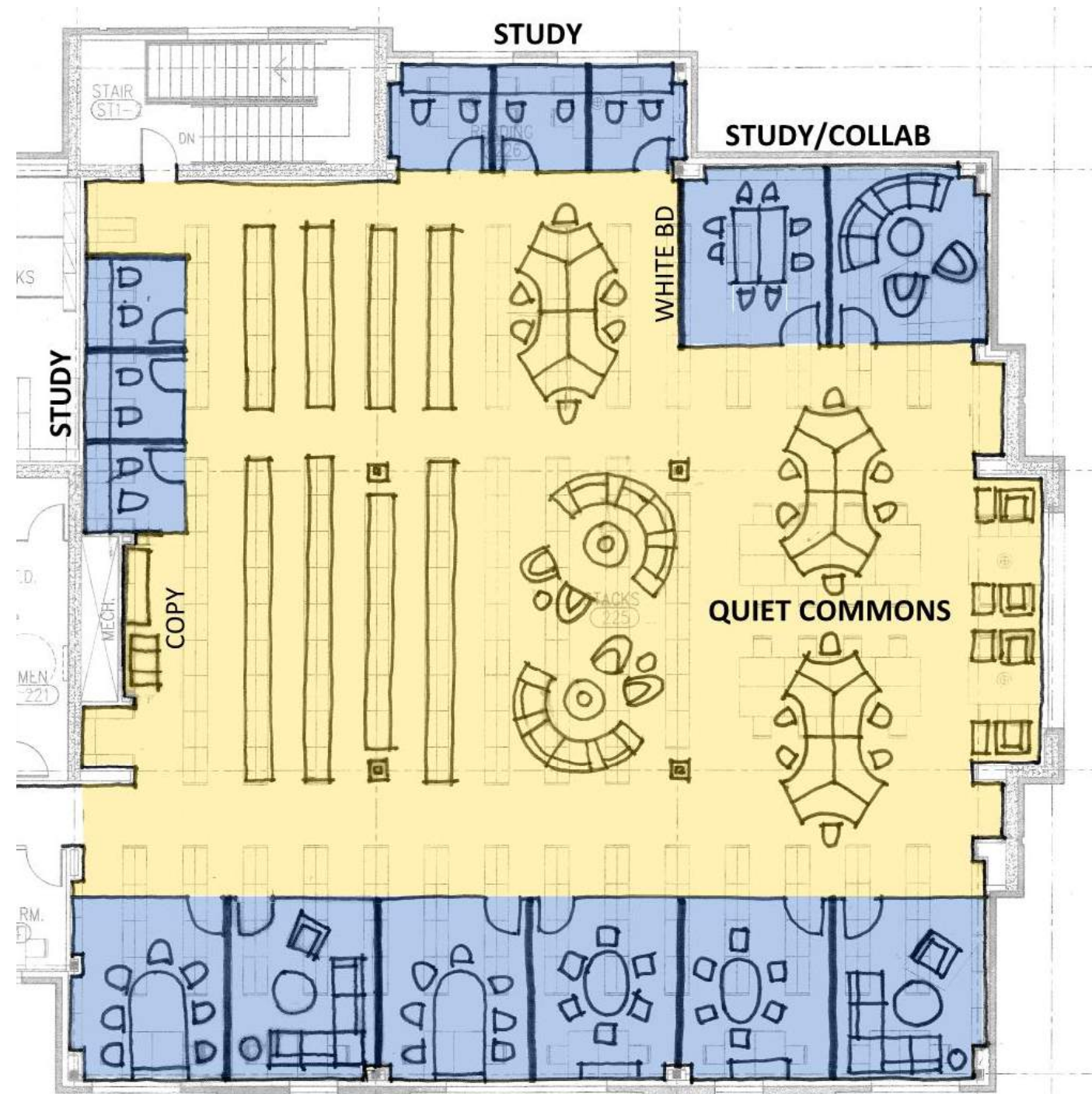
OUTCOMES
(WELL, OUTPUTS...)



QUIET COMMONS
(BEFORE)



Original



Proposed

QUIET COMMONS FURNITURE/SPACE PLAN

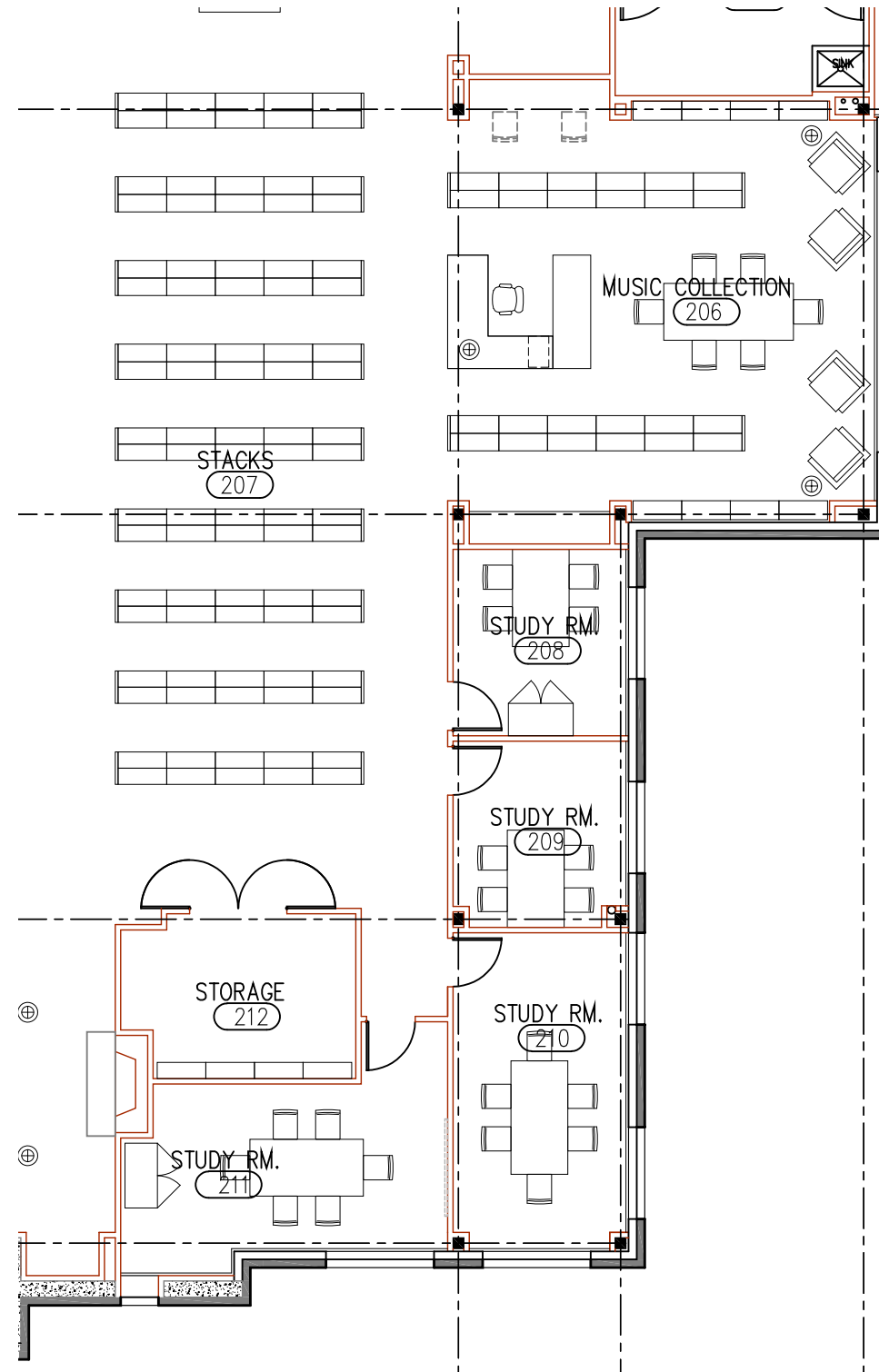


QUIET COMMONS
SAME AREA (PROPOSED)

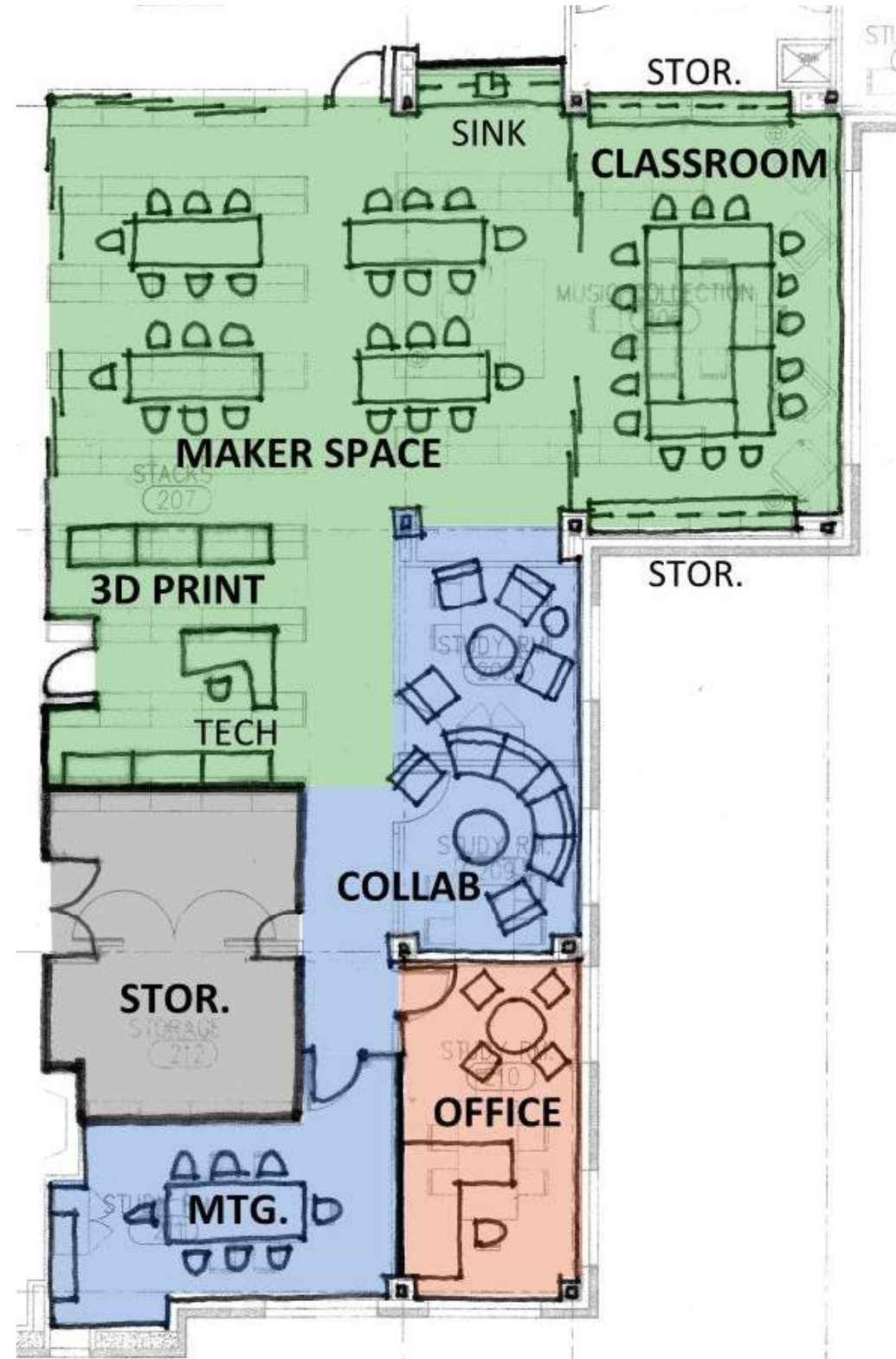


MAKER SPACE
(BEFORE)

Research Services



Original



Proposed

MAKER SPACE FURNITURE/SPACE PLAN



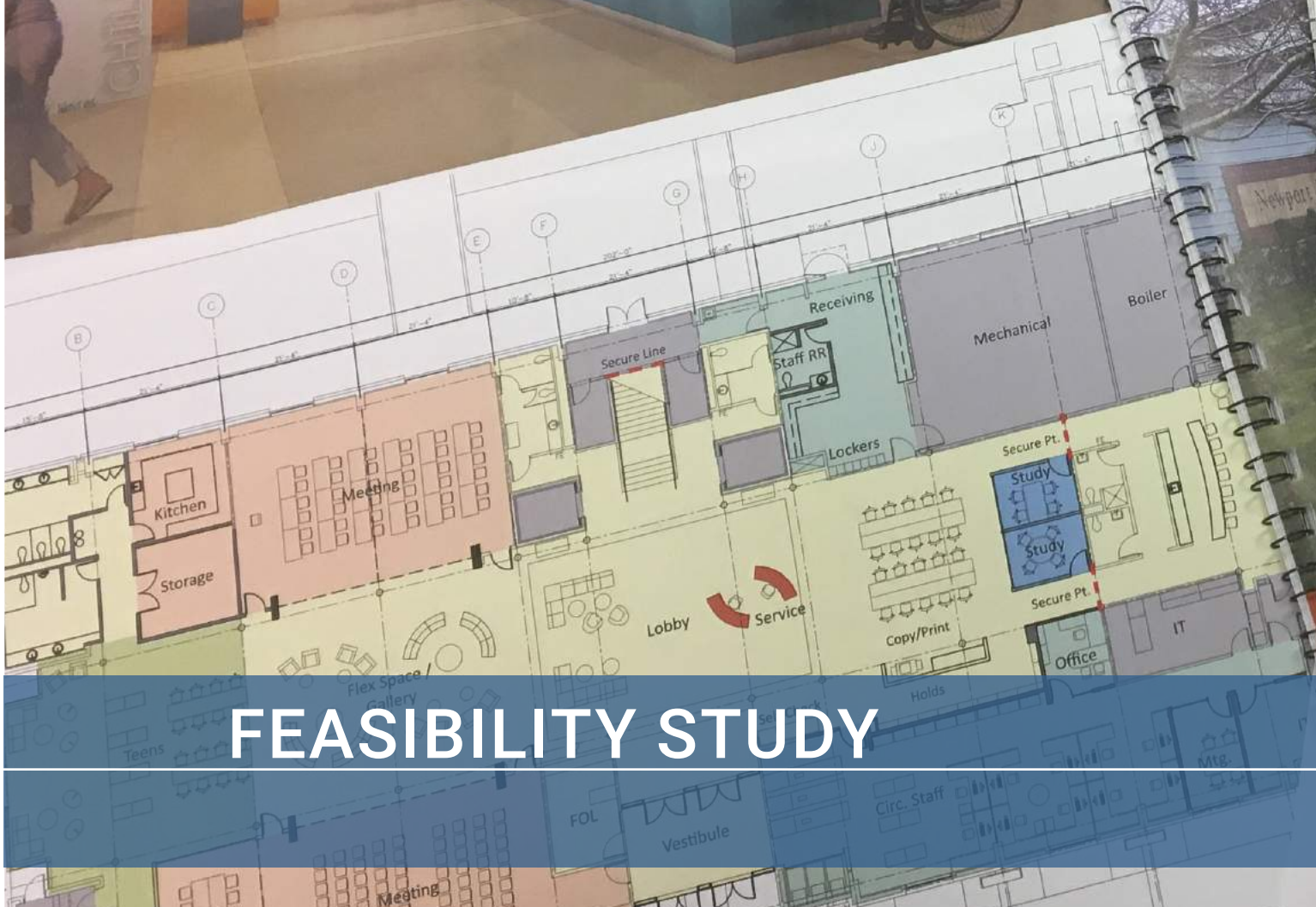
MAKER SPACE
SAME AREA (PROPOSED)

STRATEGIES
HOW TO MAKE IT HAPPEN

DESCHUTES PUBLIC LIBRARY
April 18, 2016 FFA Architecture



FFA Architecture + Interiors
CITY OF SPRINGFIELD, OREGON
PUBLIC LIBRARY NEEDS ASSESSMENT AND PROGRAMMATIC



FEASIBILITY STUDY

ruthmetz@spiretech.com
www.librarycoach.com

www.ffadesign.com

RUTH METZ
Kraus

PROJECT GOALS:

. COMMUNITY - ENGAGE & REFLECT DIV

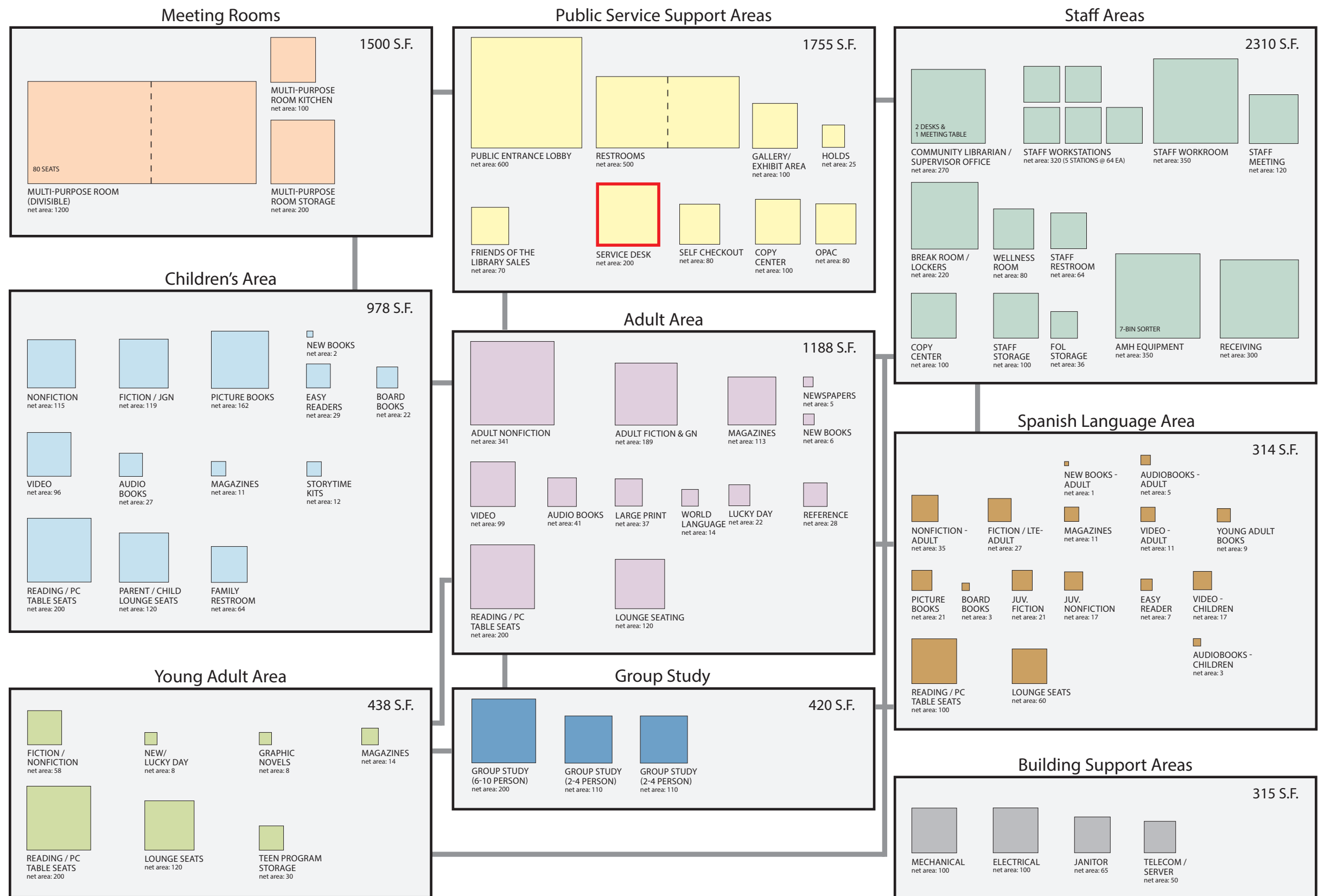
- STEWARDSHIP - HONOR PUBLIC'S IN

. IMAGE - REFE

. CHILDREN

TEENS

MASTER PLAN



SPACE ALLOCATIONS

HOLISTIC VIEW
 THOUGHTFUL, STRATEGIC APPROACH

Construction Cost

Actual Construction of the Building & Site

Project Cost

Indirect Expenses required to complete the entire project

- (+/- 25% - 35% of Construction Cost)*

Furniture, Fixtures & Equipment (FF&E) Cost

Loose furniture, shelving and other similar equipment

- (+/- 7% - 10% of Construction Cost) *

Library Technology Cost

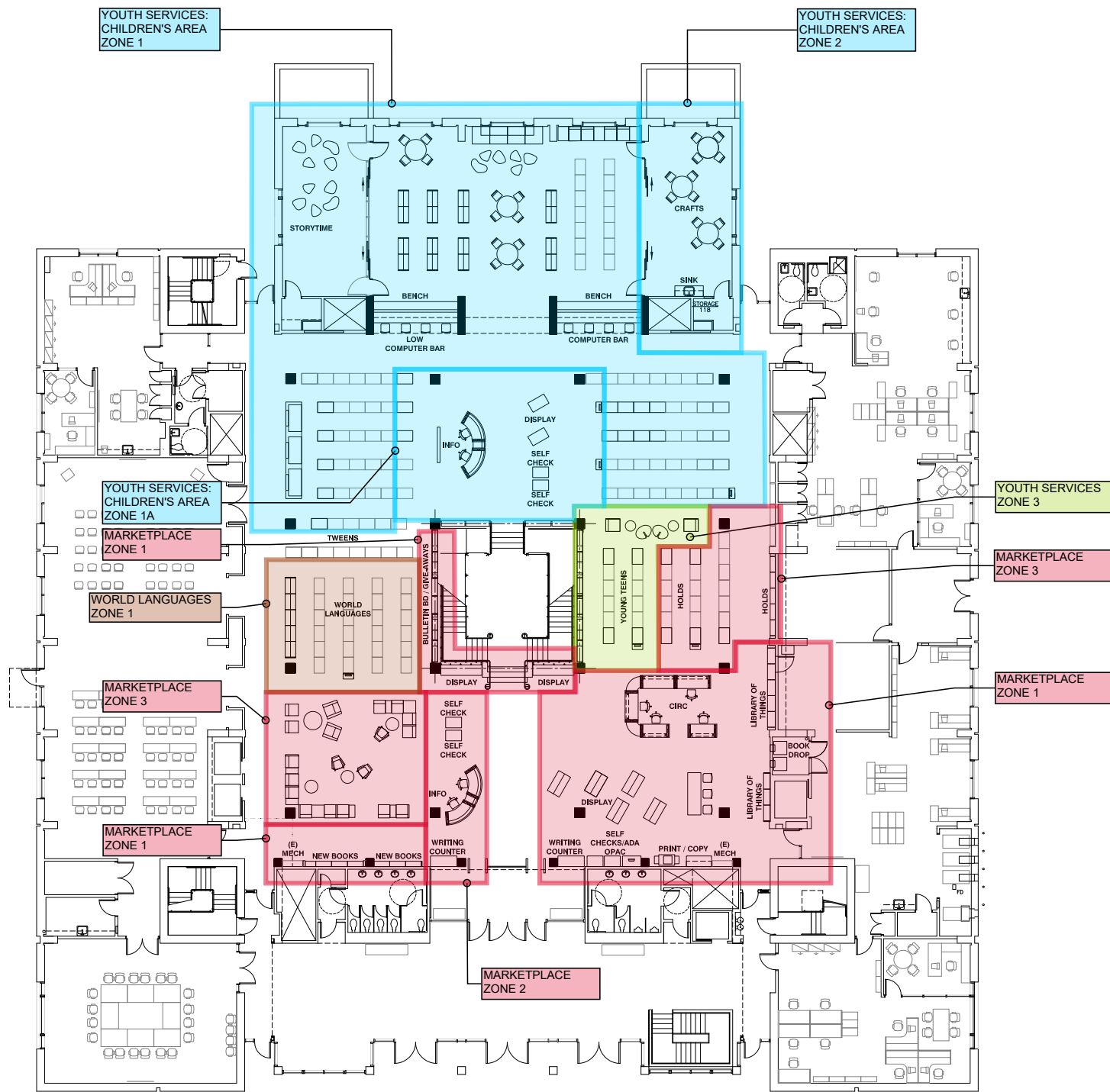
Public and staff technology equipment, software, support and supplies

- (Varies widely, depending upon scope of work)

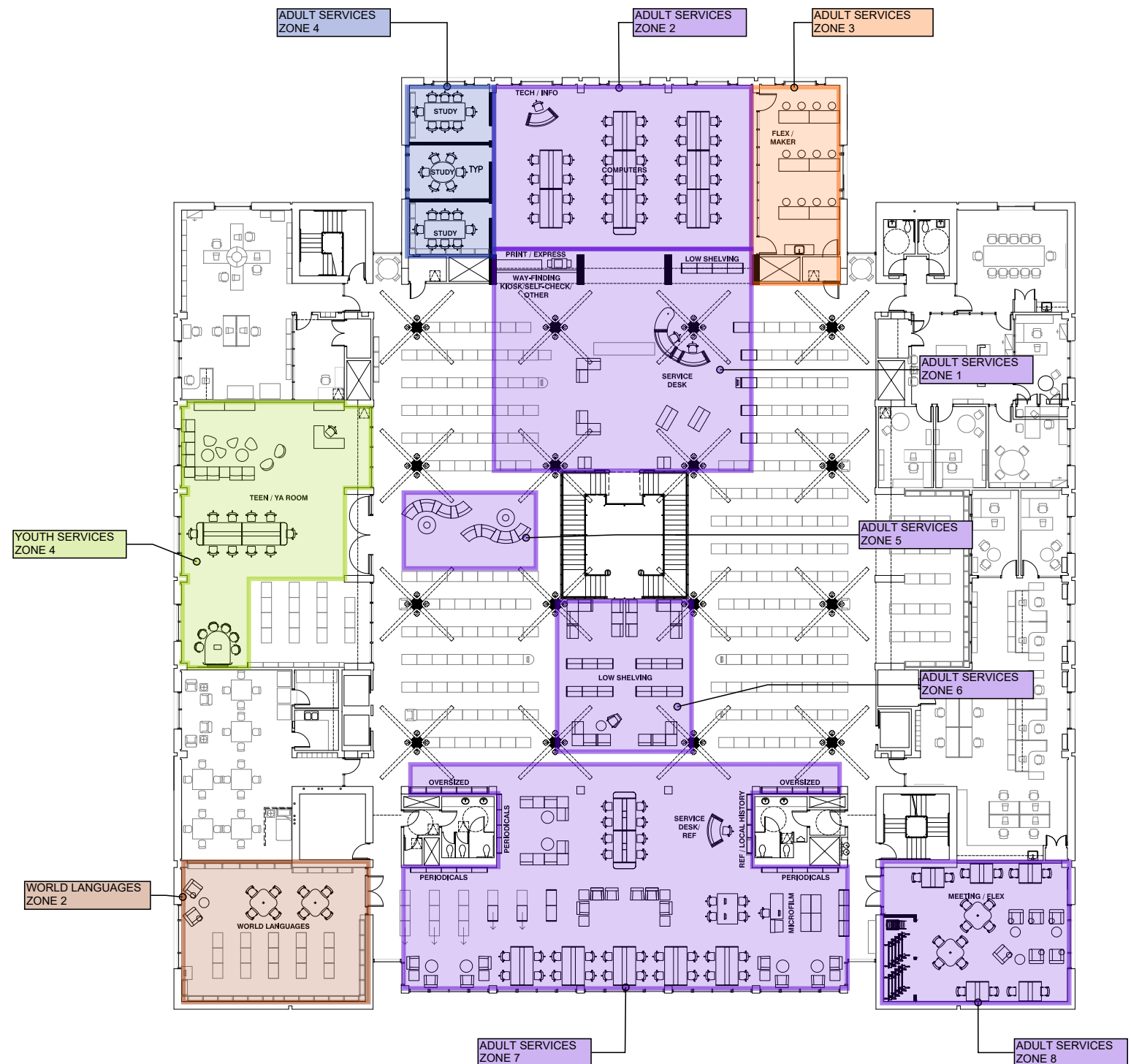
* Percentages noted assume New Construction. Renovations vary widely w/scope of work.

COST ESTIMATE COMPONENTS

INFORMS PRIORITIES FOR SCOPE OF WORK & FUND-RAISING GOALS



Lower Level



Upper Level

PHASED APPROACH PLAN FOR FLEXIBILITY & CHANGES

WORKING WITH DESIGN CONSULTANTS
WHO YA GONNA CALL?



HOW TO HIRE A DESIGN CONSULTANT?



**GETTING THE MOST OUT OF YOUR RELATIONSHIP
WITH DESIGN CONSULTANTS**

QUESTIONS?



TROY AINSWORTH

Principal
FFA Architecture and Interiors, Inc.



BRENDA KATZ

Senior Associate
FFA Architecture and Interiors, Inc.



AMELIA SHELLEY

Executive Director
Fort Vancouver Regional Libraries



ISAAC GILMAN

Dean of University Libraries
Pacific University