

# Give Us a Dollar and We'll Give You Back Four (2012-13)

and the Oregon/Washington  
Version



# Why

- Informal analyses of a state's public libraries
- Public libraries doing more, struggle for funding
- Belief: libraries provide excellent value, better funding yields better results.
- Suspicion: Smaller libraries don't tell their stories as well as they could, may lack internal resources to compare themselves with similar libraries.





# Intended Audience

- Librarians, especially in smaller libraries (6,000 with fewer than three librarians)
- Friends of the Library who help tell library story
- Library schools and consultants as detailed overview of library metrics



# Three Related Publications

- *Give Us a Dollar and We'll Give You Back Four* (2012-13): paperback, PDF ebook, Kindle
- *Graphing Public Library Benefits*: PDF ebook only
- *Give Us a Dollar and We'll Give You Back Four: Oregon and Washington Library Benefits and Spending*: free PDF, also hardback—prepared for this conference.





**Give Us a Dollar and  
We'll Give You Back Four  
(2012-13)**

Walt Crawford

# Graphing Public Library Benefits

### Circulation Per Capita

Circulation per capita correlates strongly (0.53) with spending per capita.

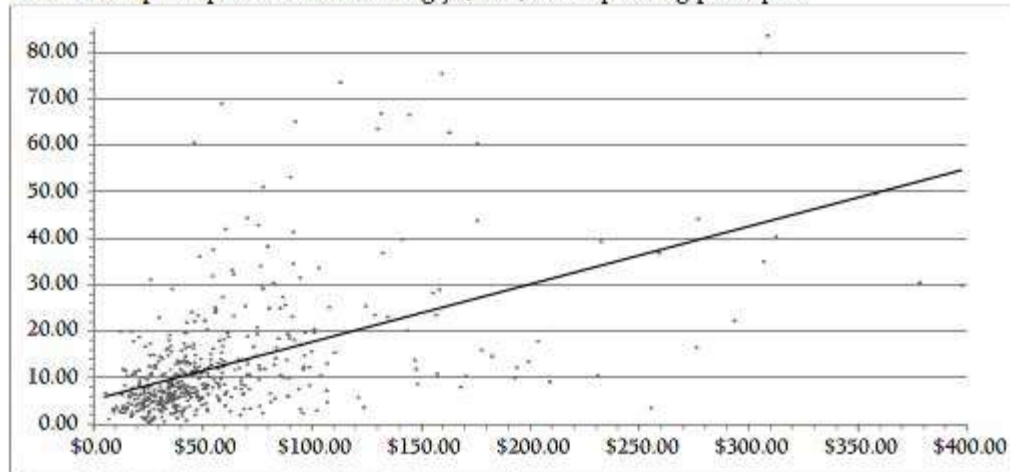


Figure 3.6 Circulation per capita plotted against spending per capita

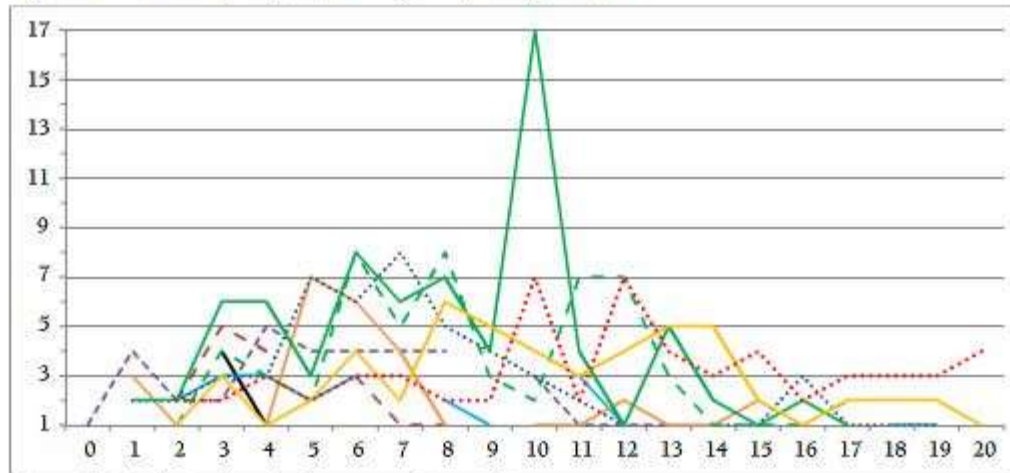


Figure 3.7 Circulation (rounded) occurrence by spending category, part 1





Give Us a Dollar and  
We'll Give You Back Four:  
Oregon and Washington Library  
Benefits and Spending



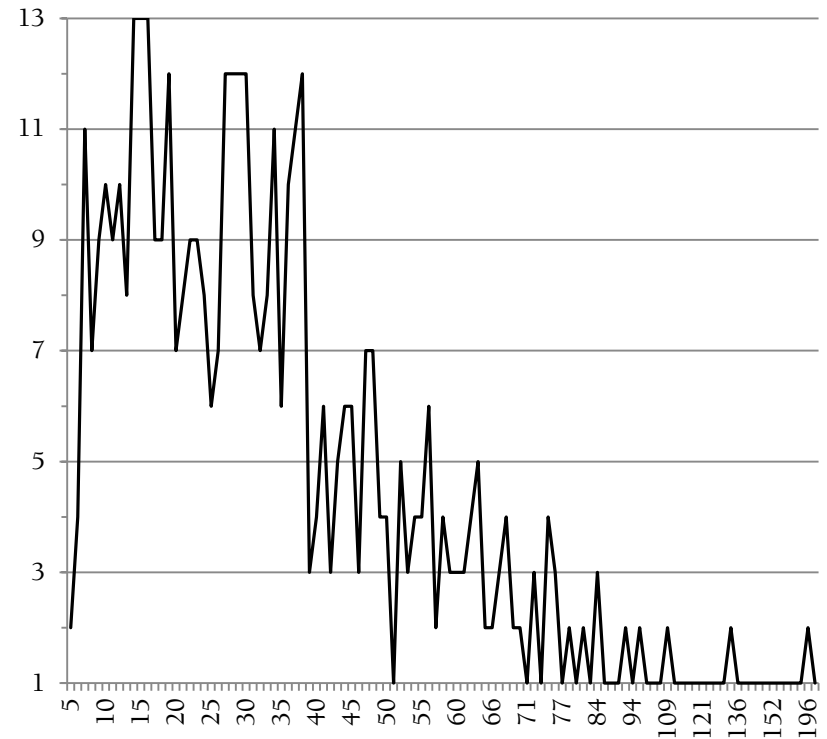
# Stepping Through \$4

- Size groups based on reality, not abstraction
- Small libraries treated same as large libraries
- Expenditure brackets and metric levels also based on reality for FY2010
- Examples: Chapter 15, libraries serving 18,500 to 24,999—2<sup>nd</sup> largest Or/Wa cluster



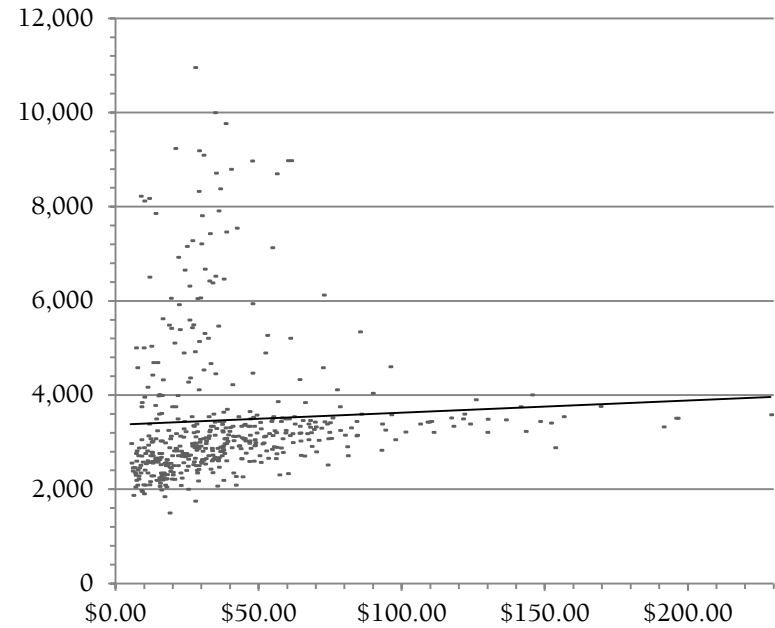
# Expenditures per Capita

\$/cap	Count	%	BenR
\$73-\$399	53	10.8%	2.94
\$53-\$72	60	12.2%	3.45
\$43-\$52	46	9.3%	4.39
\$36-\$42	46	9.3%	4.65
\$31-\$35	44	8.9%	4.65
\$26-\$30	53	10.8%	4.79
\$21-\$25	39	7.9%	4.69
\$17-\$20	38	7.7%	6.04
\$12-\$16	56	11.4%	6.03
\$5-\$11	57	11.6%	6.53

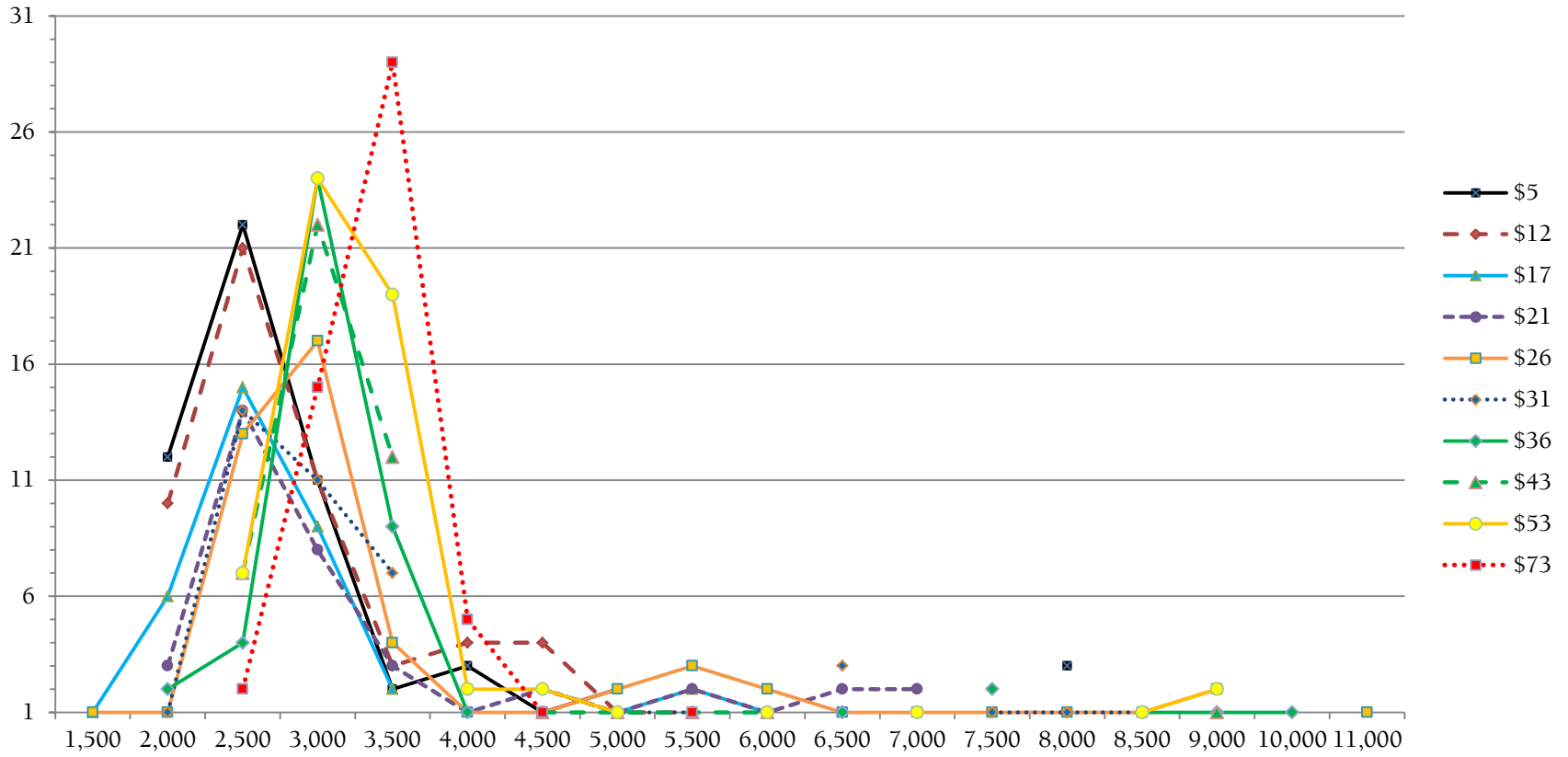


# Open Hours 1

Hours	Count	%	Cum%	BenR	\$/Cap
10,000+	1	0%		5.57	\$27.59
4,000-10,000	82	17%	17%	4.65	\$29.53
3,100-3,999	147	30%	47%	3.83	\$53.40
2,700-3,099	125	25%	72%	4.94	\$33.42
2,400-2,699	74	15%	87%	5.50	\$20.75
2,100-2,399	43	9%	96%	4.68	\$16.69
1,822-2,099	18	4%	100%	5.41	\$13.34
1,500-1,820	1	0%	100%	3.73	\$27.54
1,041-1,499	1	0%	100%	4.34	\$18.56

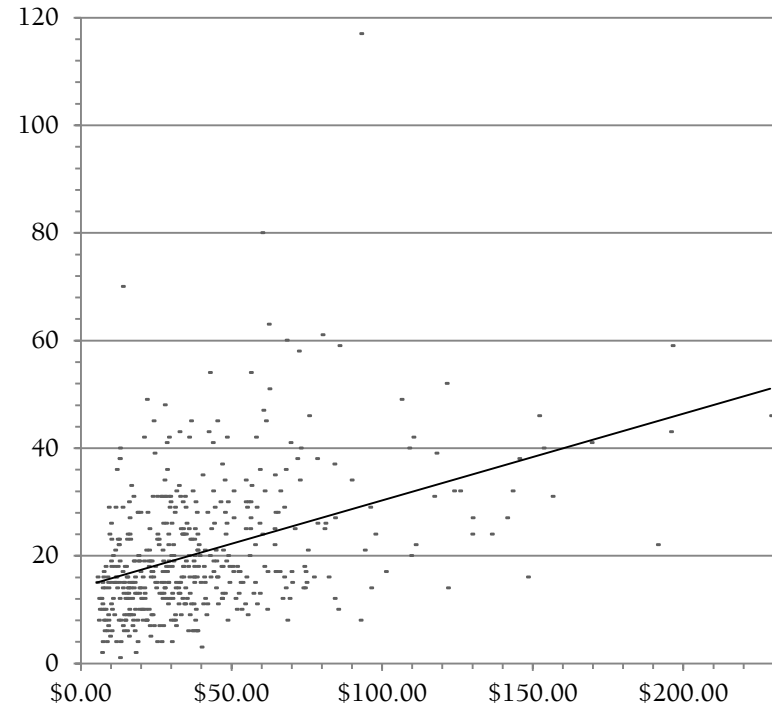


# Open Hours 2



# PCs for Patron Use

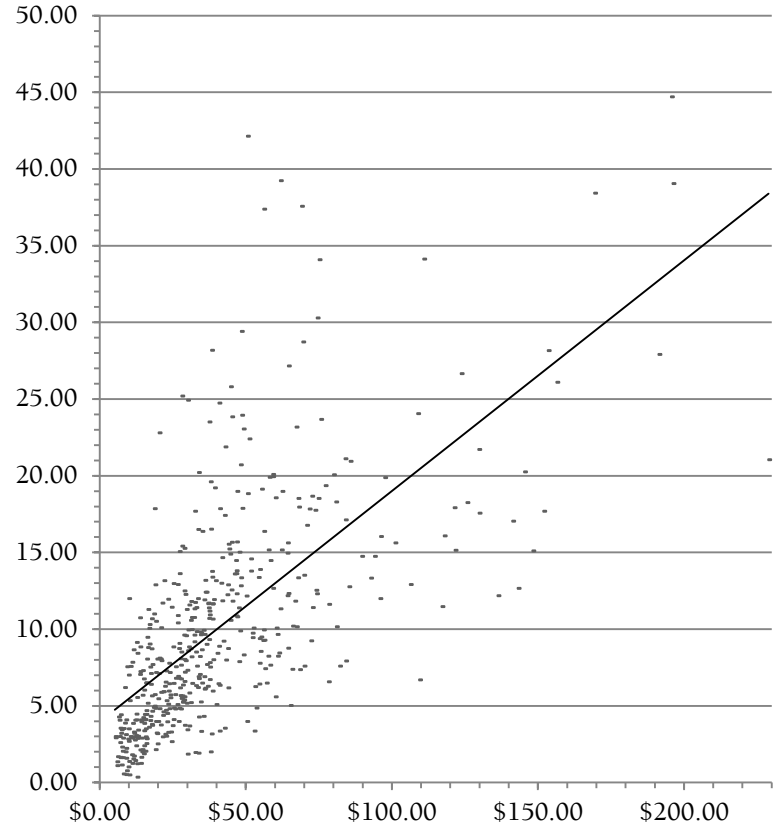
PCs	Count	%	Cum%	BenR	\$/Cap
100+	1	0%		8.62	\$92.82
40-99	40	8%	8%	3.89	\$60.73
20-39	160	33%	41%	4.25	\$37.46
13-19	164	33%	74%	4.78	\$28.03
9-12	71	14%	89%	5.08	\$23.54
6-8	41	8%	97%	5.43	\$21.45
4-5	11	2%	99%	5.88	\$15.71
0-3	4	1%	100%	7.07	\$15.25





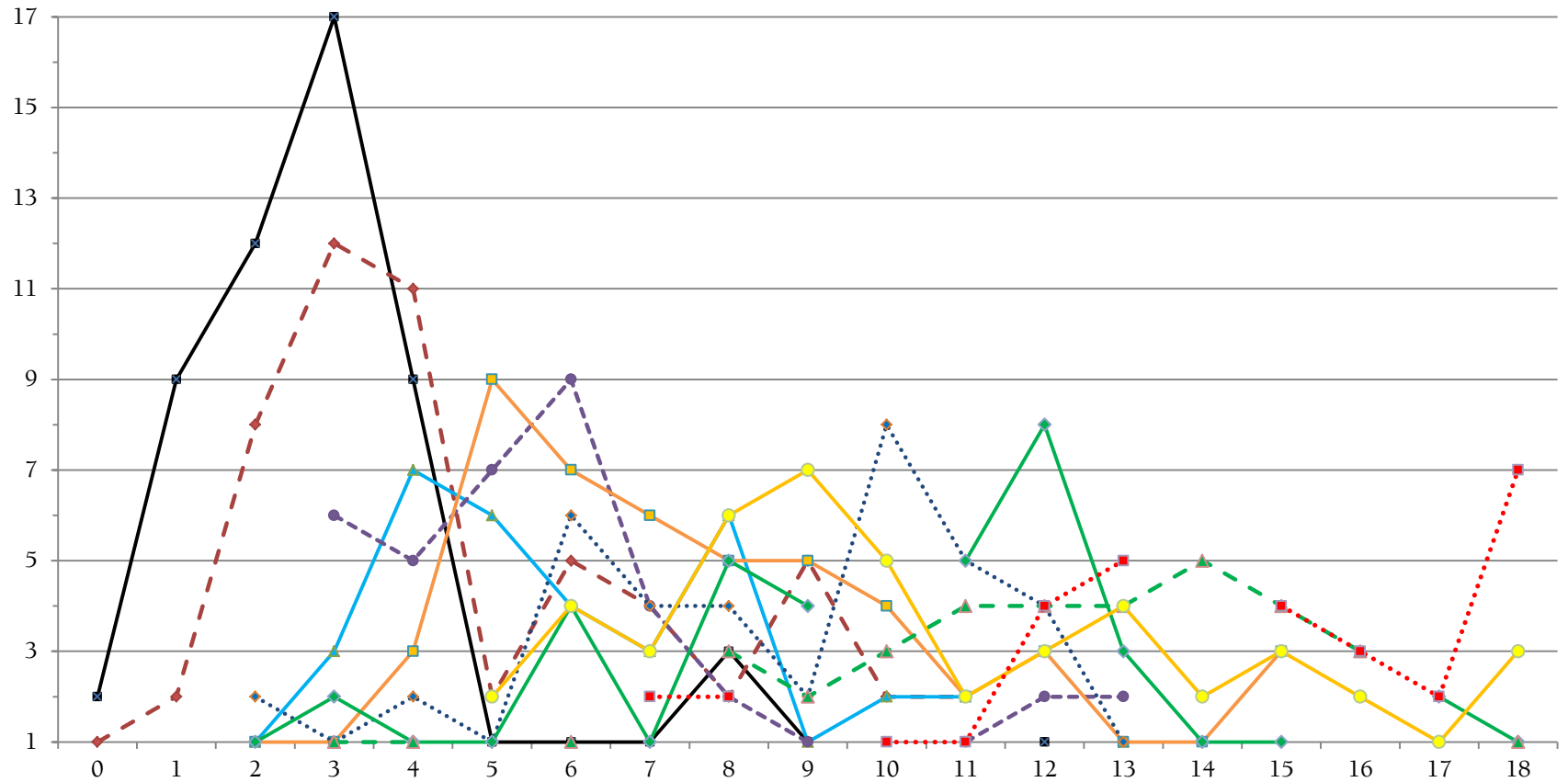
# Circulation per capita

Circ/cap	Count	%	Cum%	BenR	\$/Cap
24+	25	5%		6.89	\$74.37
17-23	47	10%	15%	4.79	\$62.33
13-16	45	9%	24%	4.51	\$47.55
10-12	75	15%	39%	4.78	\$37.37
8-9	59	12%	51%	4.79	\$32.91
6-7	73	15%	66%	4.28	\$29.21
4-5	67	14%	79%	4.26	\$22.39
2-3	71	14%	94%	4.81	\$15.01
0-1	30	6%	100%	4.35	\$10.39

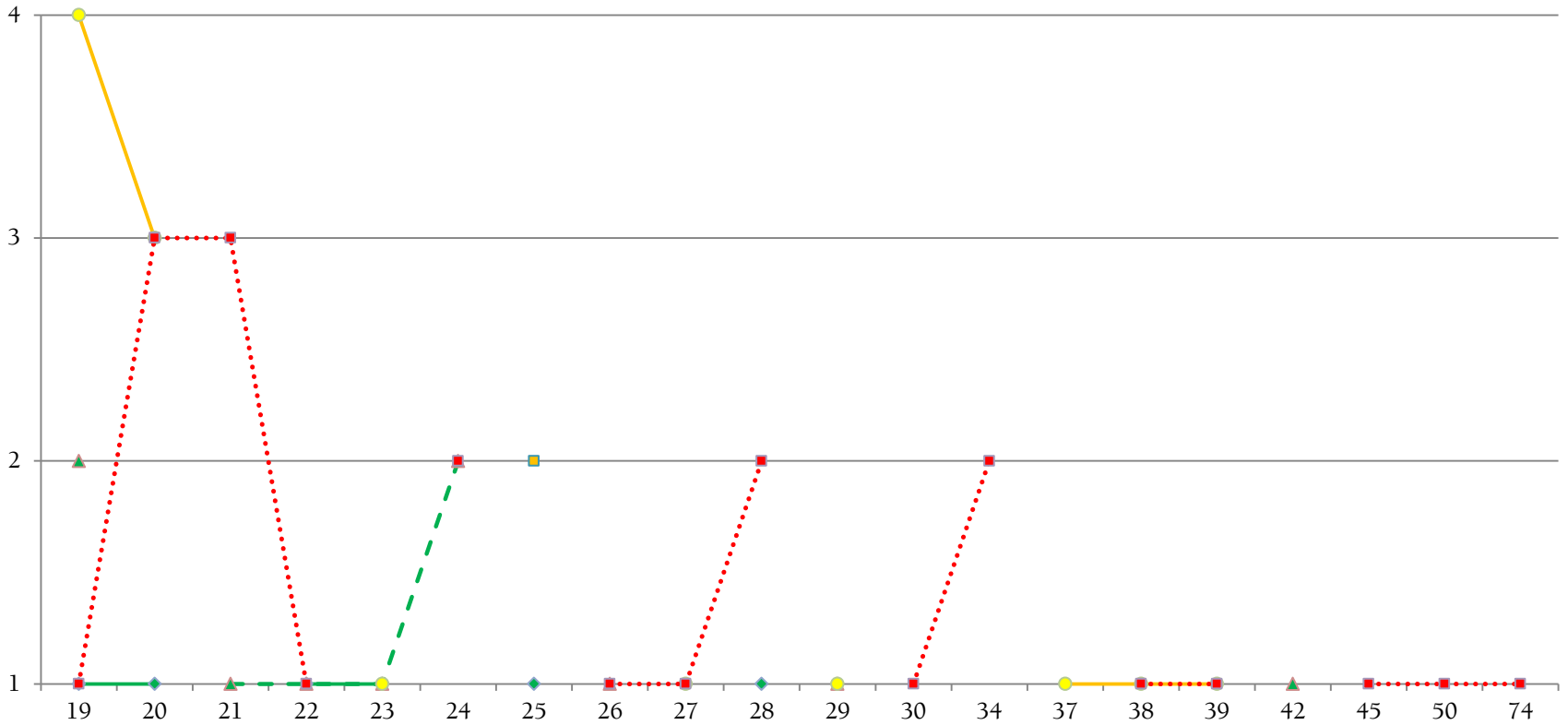




# Circulation per capita 2



# Circulation per capita 3



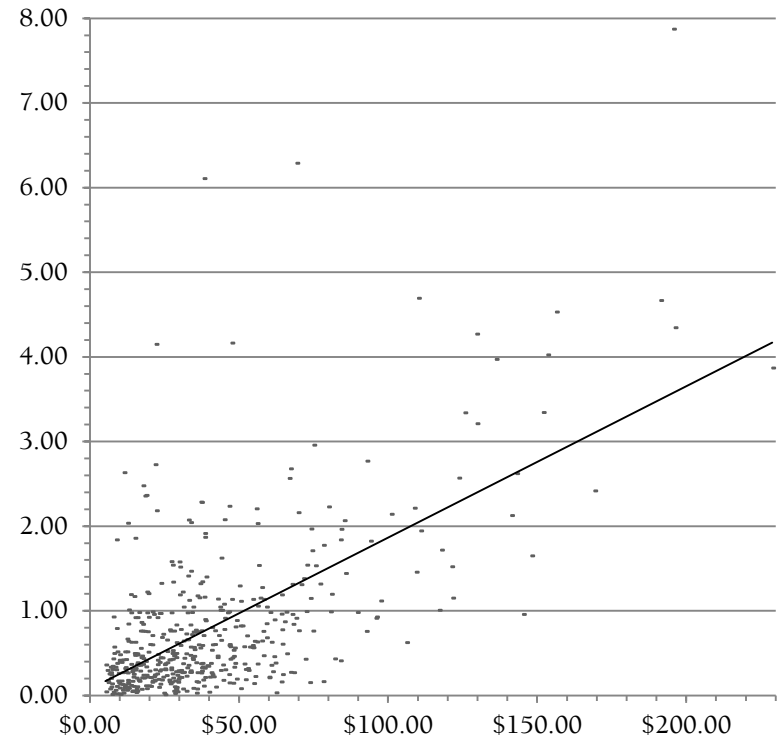
# Circulation and Reference per cap

\$/cap	Circulation per cap			Reference per cap		
	25%	Med	75%	25%	Med	75%
\$73-\$399	12.89	17.73	23.65	1.11	1.82	2.77
\$53-\$72	8.50	11.98	17.85	0.45	0.76	1.13
\$43-\$52	10.61	13.45	15.66	0.34	0.59	0.98
\$36-\$42	7.71	11.27	13.31	0.29	0.54	0.89
\$31-\$35	6.46	9.38	10.88	0.28	0.51	0.78
\$26-\$30	5.47	7.29	9.93	0.18	0.30	0.76
\$21-\$25	4.41	5.70	6.96	0.23	0.36	0.67
\$17-\$20	4.09	5.78	8.03	0.21	0.44	0.82
\$12-\$16	2.87	4.06	6.81	0.16	0.33	0.62
\$5-\$11	1.61	2.88	3.84	0.10	0.26	0.39
Overall	4.66	8.07	12.82	0.24	0.47	0.97

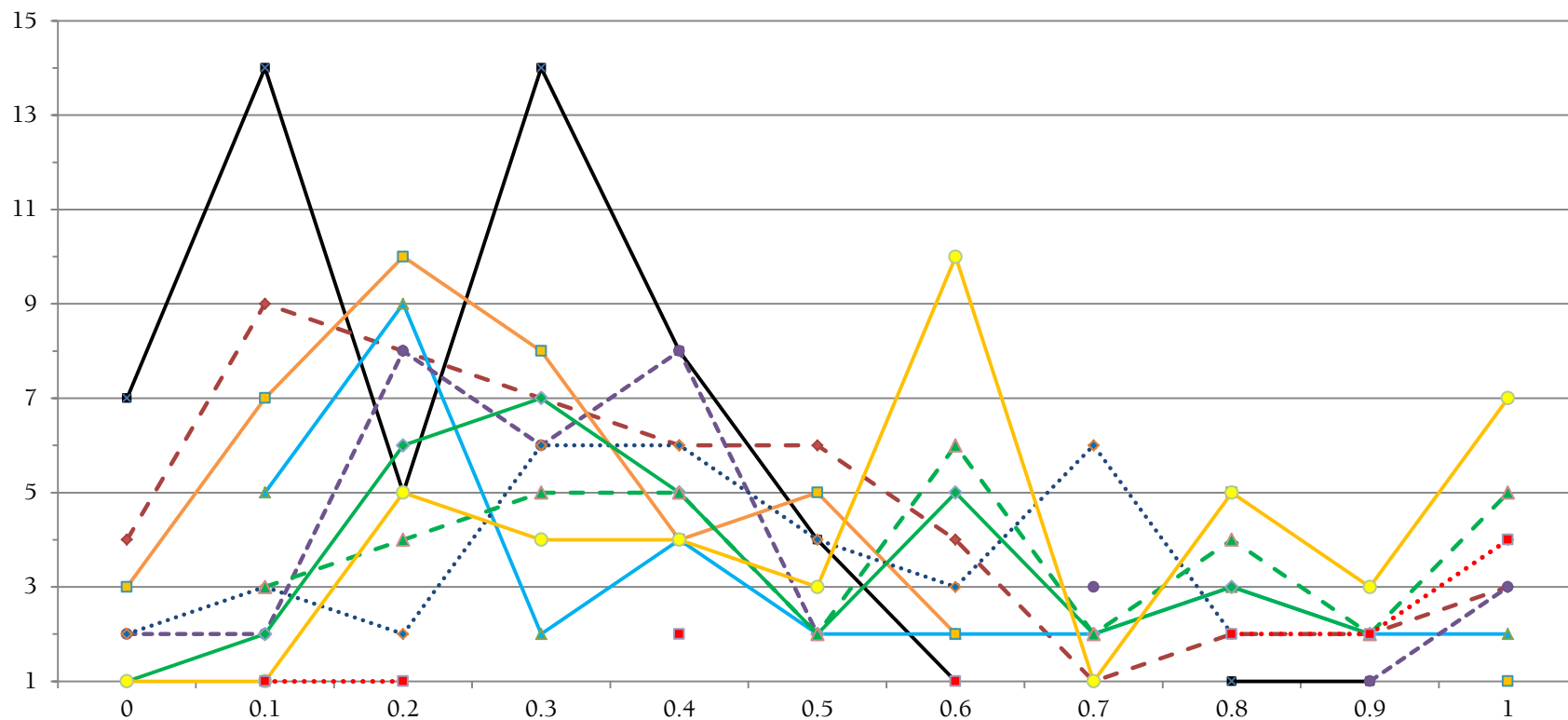


# Reference per capita

Ref/cap	Count	%	Cum%	BenR	\$/Cap
2+	45	9%		4.28	\$69.69
1.25-1.99	37	8%	17%	4.02	\$57.55
0.9-1.24	60	12%	29%	4.49	\$43.54
0.7-0.89	44	9%	38%	4.80	\$36.74
0.5-0.6	49	10%	48%	4.56	\$36.31
0.35-0.49	73	15%	63%	4.83	\$26.87
0.25-0.34	60	12%	75%	4.85	\$27.04
0.15-0.24	61	12%	87%	4.68	\$24.40
0.06-0.14	43	9%	96%	4.27	\$17.18
0-0.05	20	4%	100%	4.59	\$15.53

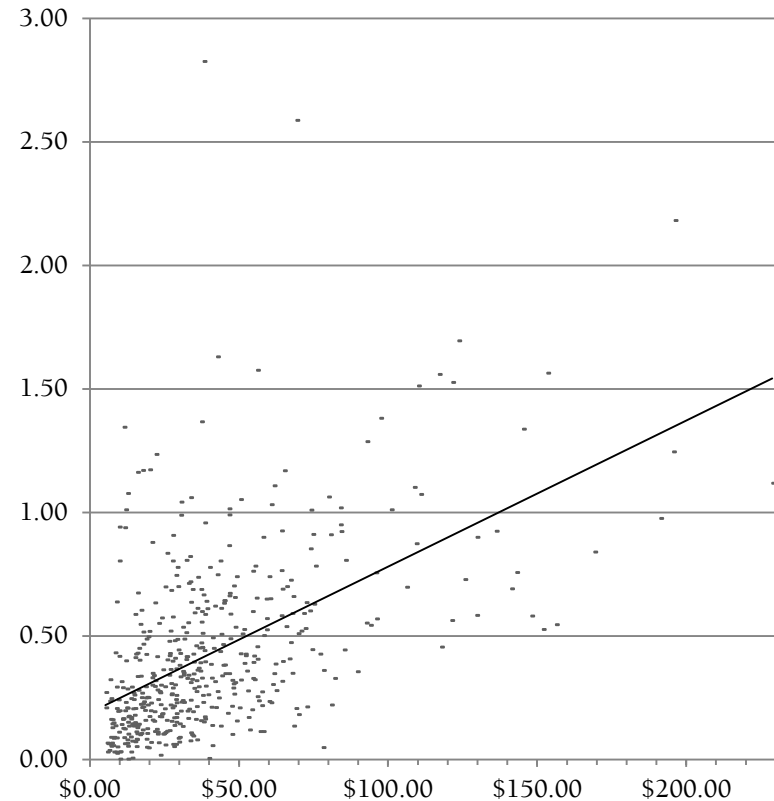


# Reference per capita 2



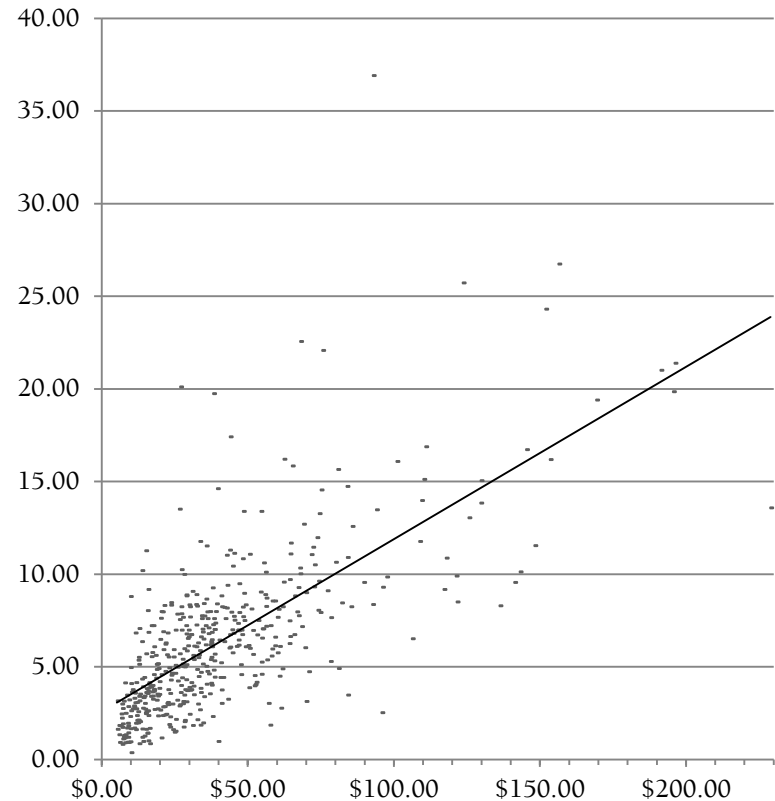
# Program Attendance per Capita

Att/cap	Count	%	Cum%	BenR	\$/Cap
1.1+	24	5%		4.54	\$81.09
0.7-1.09	61	12%	17%	4.62	\$50.43
0.5-0.69	70	14%	32%	4.34	\$45.78
0.4-0.49	51	10%	42%	4.80	\$32.37
0.3-0.39	59	12%	54%	4.61	\$36.29
0.2-0.29	88	18%	72%	4.87	\$24.20
0.11-0.19	77	16%	87%	4.61	\$21.56
0-0.1	62	13%	100%	4.88	\$15.22

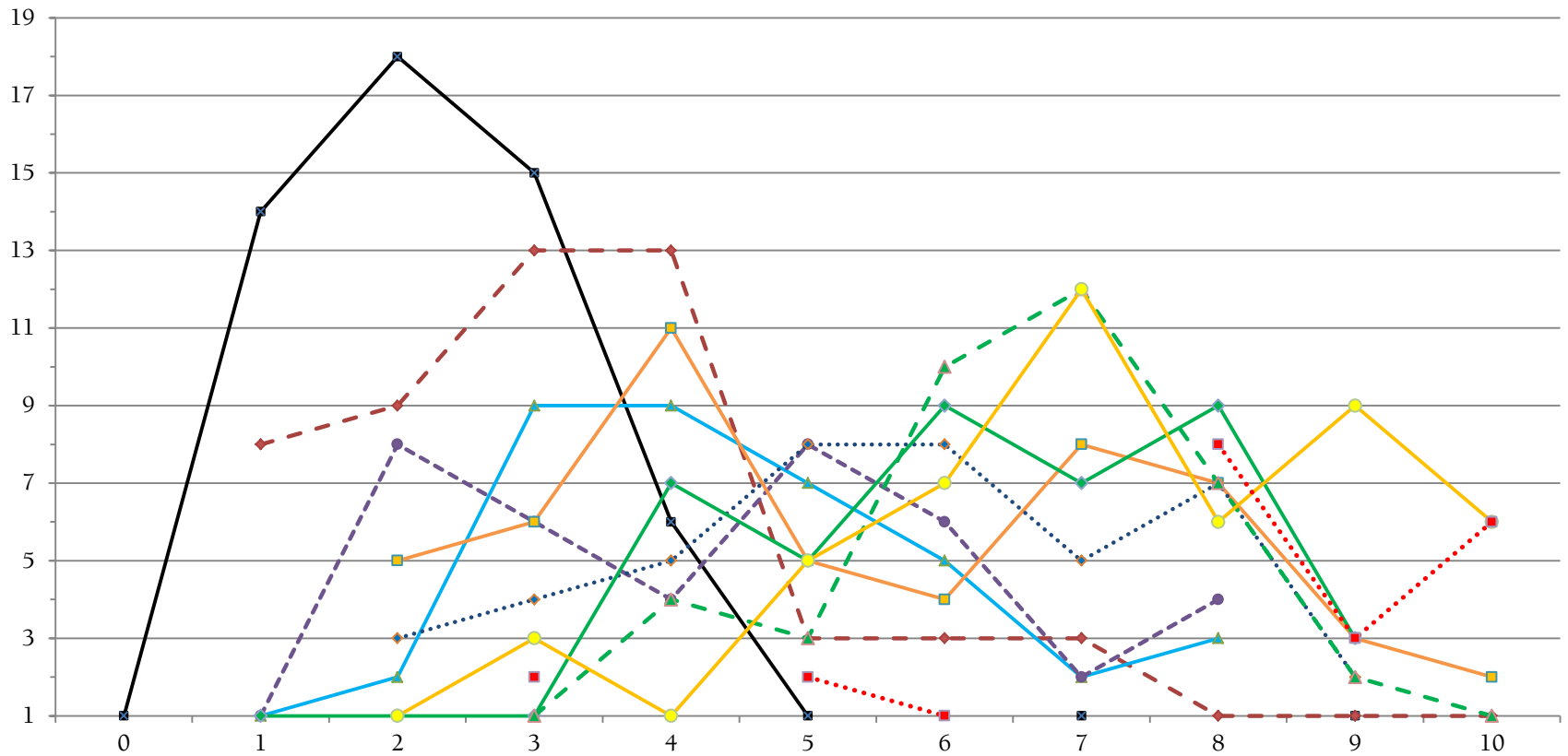


# Patron Visits per Capita

Vis/cap	Count	%	Cum%	BenR	\$/Cap
13+	34	7%		3.75	\$97.47
9-12	48	10%	17%	4.33	\$65.83
7-8	87	18%	34%	4.86	\$39.13
6	59	12%	46%	4.61	\$37.37
5	46	9%	56%	5.11	\$31.01
4	48	10%	65%	4.17	\$27.42
3	70	14%	80%	4.75	\$18.91
2	49	10%	90%	4.36	\$15.77
<2	51	10%	100%	4.53	\$11.43

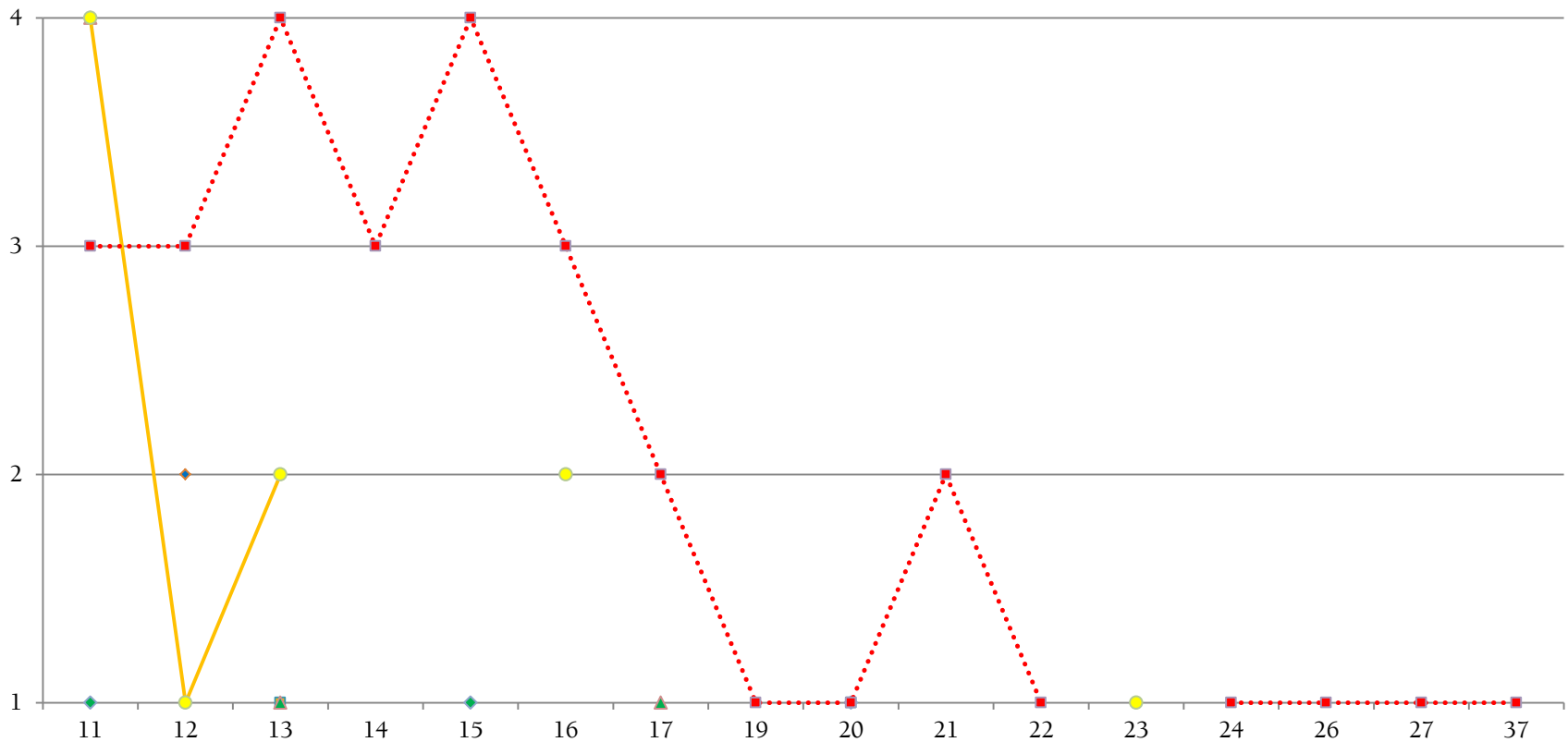


# Patron Visits per Capita 2



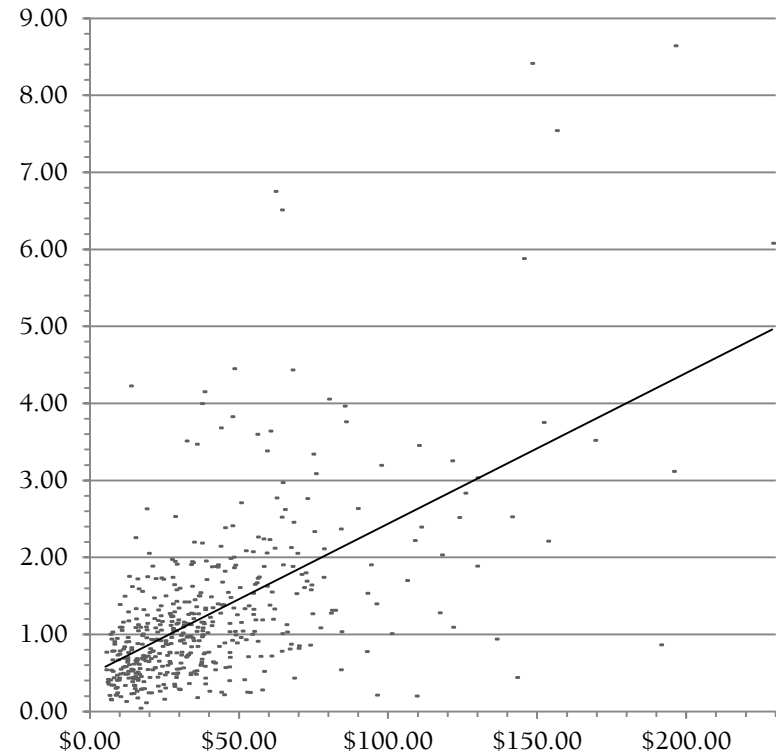


# Patron Visits per Capita 3



# PC use per capita

PC use/cap	Count	%	Cum%	BenR	\$/Cap
3.5+	22	4%		3.88	\$65.94
2.25-3.49	29	6%	10%	3.93	\$72.68
1.7-2.24	51	10%	21%	4.41	\$46.85
1.3-1.69	58	12%	33%	4.49	\$41.71
1-1.29	87	18%	50%	4.85	\$31.01
0.75-0.99	79	16%	66%	4.79	\$29.91
0.5-0.74	81	16%	83%	4.68	\$21.45
<0.5	85	17%	100%	4.86	\$16.69



# If there's a 2014 version...

- Combine graphs & tables
- Use fewer size divisions (maybe 10?)
- Drop some measures for simplicity
- Add year-to-year changes and distribution graphs
- Do states as separate book (if at all)



# The problem with averages

	Overall	Average	Median	Diff	Diff%	Q1	Q3
LSA		34,412	7,548	2,798	32%	2,389	22,867
\$/cap	\$36.00	\$39.29	\$30.93	1,342	15%	\$19.42	\$47.29
Circ/cap	8.67	7.77	10.09	1,168	13%	4.55	12.96



# Special Wa/Or Report

- If you don't have it, go get it—the PDF is free.
- Combines (some) tables and (some) graphs.
- Four LSA sizes
- Six levels for each metric
- Fewer metrics—omits PC count, circ per hour
- We'll look at a few items for libraries serving 3,000 to 11,999 patrons.



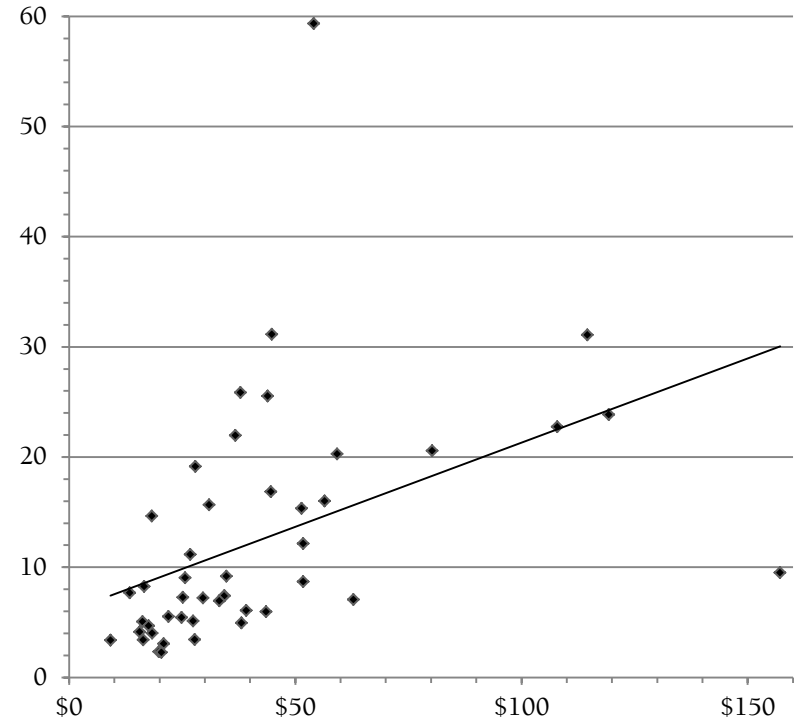
# Spending per capita

<b>\$/cap</b>	<b>Count</b>	<b>%</b>	<b>BenR</b>
\$65-\$328	5	10.9%	3.96
\$47-\$63	7	15.2%	4.55
\$36-\$46	8	17.4%	7.06
\$27-\$35	9	19.6%	4.82
\$20-\$26	7	15.2%	4.91
\$7-\$19	10	21.7%	6.01

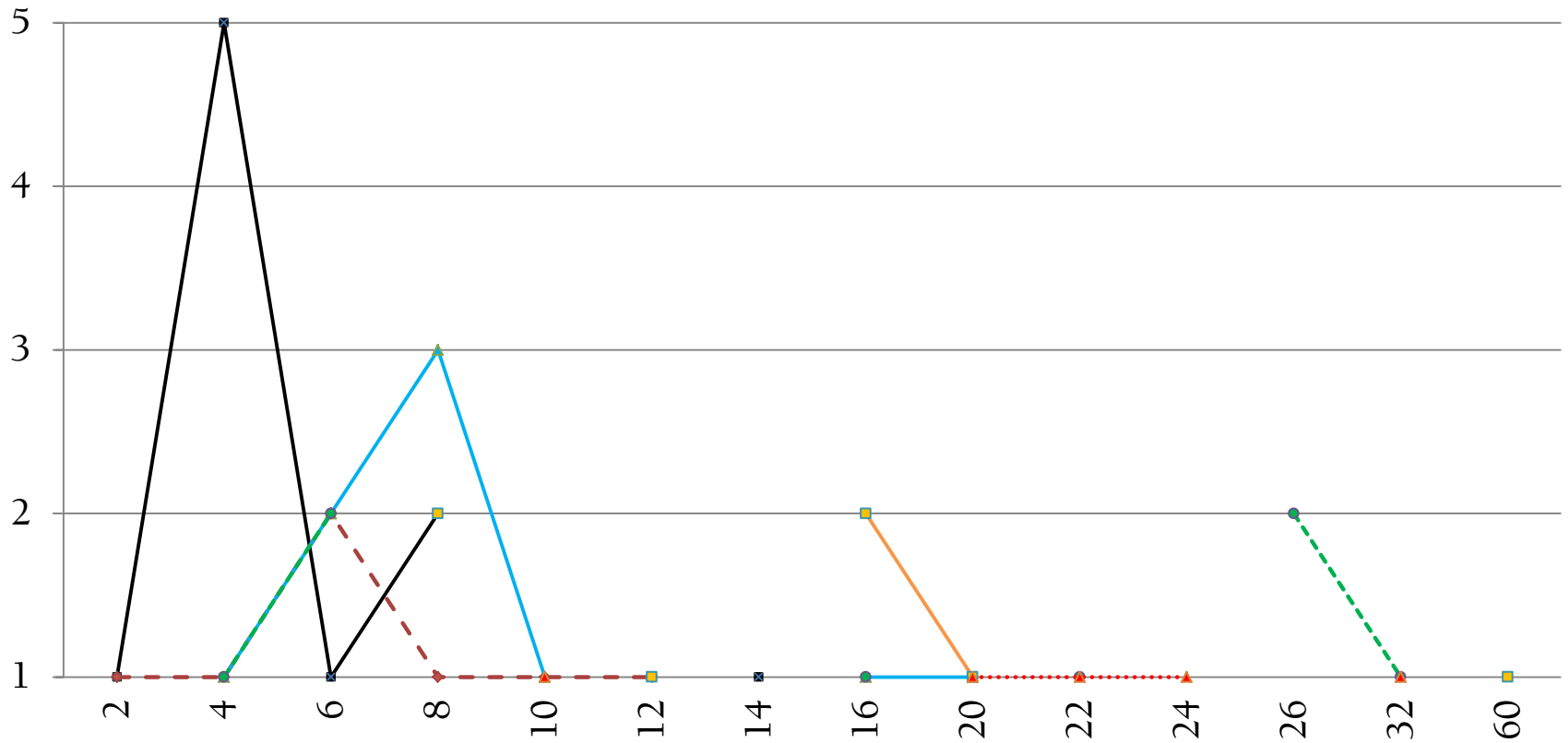


# Circulation per capita 1

Circ/cap	Count	%	Cum%	BenR	\$/Cap
21-79	8	17%		8.48	\$49.46
15-20	7	15%	33%	5.92	\$51.41
10-14	3	7%	39%	6.88	\$26.80
7-9	11	24%	63%	4.82	\$34.27
5-6	7	15%	78%	4.02	\$27.43
<5	10	22%	100%	4.60	\$19.10



# Circulation per capita 2





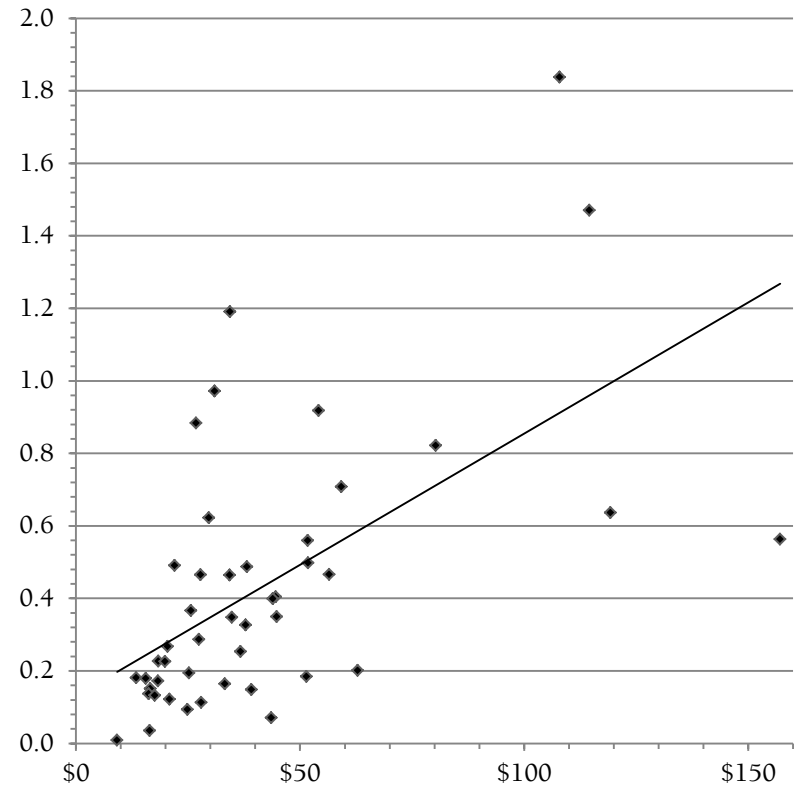
# Reference transactions

Ref/cap	Count	%	Cum%	BenR	\$/Cap
1.2-4.2	6	13%		6.45	\$56.68
0.8-1.19	2	4%	17%	6.51	\$39.00
0.6-0.79	9	20%	37%	4.72	\$44.81
0.4-0.59	4	9%	46%	6.40	\$22.19
0.2-0.39	9	20%	65%	4.91	\$27.94
<0.2	16	35%	100%	4.08	\$21.44



# Program attendance per capita

Atten/cap	Count	%	Cum%	BenR	\$/Cap
0.8-9.4	7	15%		4.96	\$54.12
0.5-0.79	6	13%	28%	3.86	\$55.50
0.36-0.49	8	17%	46%	4.80	\$36.20
0.26-0.35	5	11%	57%	6.02	\$34.81
0.16-0.25	10	22%	78%	4.94	\$22.52
<0.16	10	22%	100%	5.20	\$19.24



# Always room for improvement

- I hope some of you will find the free report useful.
- I'd love to get feedback on what works, what doesn't, what might work better.
- [waltcrawford@gmail.com](mailto:waltcrawford@gmail.com)



# Telling **your** story

- Every library is different.
- Every community is different.
- Your story needs to relate your library to your community.



# Numbers matter, but...

- It's important to see how your library compares to similar libraries
- But that's just a starting point
- These tools should help create that starting point



# Fleshing out the story

- Not just reference count, but helping people in need
- Not just circulation, but how materials improve people's lives
- Not just programs, but impact of programs
- Not just PC use, but jobs found and services located



# The Mythical Average Library

- Considering a “basic numbers” book—*The Mythical Average Library: Coping with Numbers*
- Basic statistical tools, issues with averages
- Chartjunk, recognizing and avoiding
- Step-by-step: using tools you have to use national and other numbers
- Worthwhile?



# Thanks!

- Presentation:
- Books: lulu.com, then use title search
- Feedback: [waltcrawford@gmail.com](mailto:waltcrawford@gmail.com)
- Blog: Walt at Random, [walt.lishost.com](http://walt.lishost.com)
- Ejournal: Cites & Insights, [citesandinsights.info](http://citesandinsights.info)

